

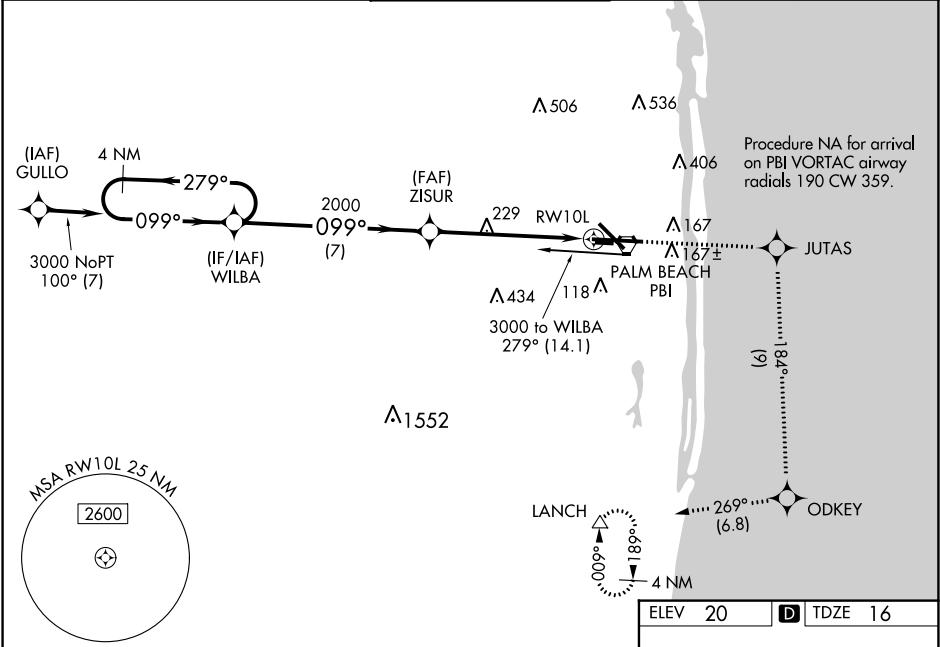
WAAS CH 97317 W10A	APP CRS 099°	Rwy Idg TDZE 16 Apt Elev 20	8800
--	------------------------	---	-------------

RNAV (GPS) Y RWY 10L

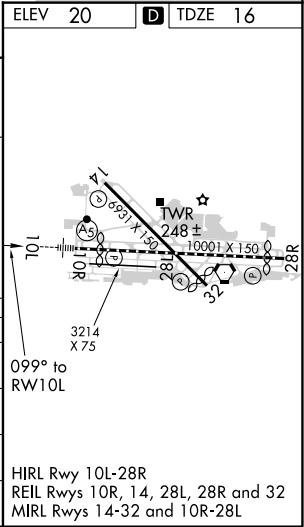
PALM BEACH INTL (PBI)

RNP APCH. <div><div>⚠</div><div>For uncompensated Baro-VNAV systems, LNAV/VNAV NA below -15°C (5°F) or above 43°C (109°F). For inop ALS, increase LNAV Cats C/D visibility to 1½ SM. # RVR 1800 authorized with use of FD or AP or HUD to DA.</div></div>	MALSR <div><div>⬆</div><div>⬆</div><div>⬆</div></div>	MISSED APPROACH: Climb to 2000 direct JUTAS and on track 184° to ODKEY and on track 269° to LANCH and hold.
--	--	---

D-ATIS 123.75	PALM BEACH APP CON 128.3 317.4	PALM BEACH TOWER 119.1 257.8	GND CON 121.9 284.6	CLNC DEL 121.6 284.6
-------------------------	--	--	-------------------------------	--------------------------------



VGSI and RNAV glidepath not coincident (VGSI Angle 3.00/TCH 68).				
4 NM Holding Pattern WILBA				
3000 ← 279° 099° → 099° GP 3.00° TCH 52				
2000 ZISUR 2000 *1.3 NM to RWY10L				
7 NM 4.8 NM 1.3 NM				
CATEGORY	A	B	C	D
LPV DA #	216/24 200 (200-½)			
LNAV/VNAV DA	404/40 388 (400-¾)			
LNAV MDA	500/24 484 (500-½)		500/50 484 (500-1)	
CIRCLING	560-1 540 (600-1)		680-1¾ 660 (700-1¾) 780-2½ 760 (800-2½)	



SE-3, 31 DEC 2020 to 28 JAN 2021

SE-3, 31 DEC 2020 to 28 JAN 2021