

|         |          |      |
|---------|----------|------|
| APP CRS | Rwy Idg  | 6513 |
| 321°    | TDZE     | 16   |
|         | Apt Elev | 19   |

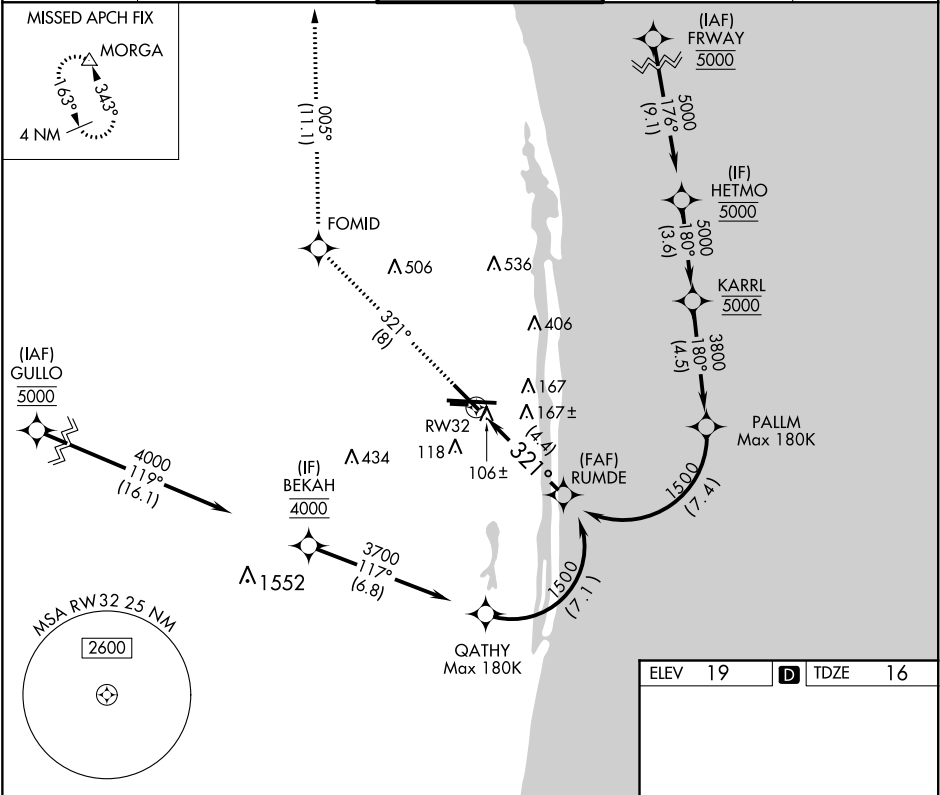
RNAV (RNP) Z RWY 32

PALM BEACH INTL (PBI)

RF and GPS required. For uncompensated Baro-VNAV systems, procedure NA below 3°C (38°F) or above 48°C (119°F).

MISSED APPROACH: Climb to 2000 on track 321° to FOMID and on track 005° to MORGA and hold.

|                  |                                   |                                 |                        |                         |
|------------------|-----------------------------------|---------------------------------|------------------------|-------------------------|
| D-ATIS<br>123.75 | PALM BEACH APP CON<br>128.3 317.4 | PALM BEACH TOWER<br>119.1 257.8 | GND CON<br>121.9 284.6 | CLNC DEL<br>121.6 284.6 |
|------------------|-----------------------------------|---------------------------------|------------------------|-------------------------|



Procedure

Turn

NA

RUMDE

1500

321°

RW32

4.4 NM

GP 3.00°

TCH 57

See planview for multiple IF locations.

2000

fr 321°

FOMID

fr 005°

MORGA

VGSI and RNAV glidepath not coincident (VGSI Angle 3.25/TCH 57).

|             |   |        |              |   |
|-------------|---|--------|--------------|---|
| CATEGORY    | A | B      | C            | D |
| RNP 0.12 DA |   | 345-1  | 329 (400-1)  |   |
| RNP 0.30 DA |   | 438-1¼ | 422 (500-1¼) |   |

AUTHORIZATION REQUIRED

ELEV 19

TDZE 16

TWR 248±

10001 X-150 0

3214 X-75

321° to RW32

HIRL Rwy 10L-28R

REIL Rwys 10R, 14, 28L, 28R and 32

MIRL Rwys 14-32 and 10R-28L