

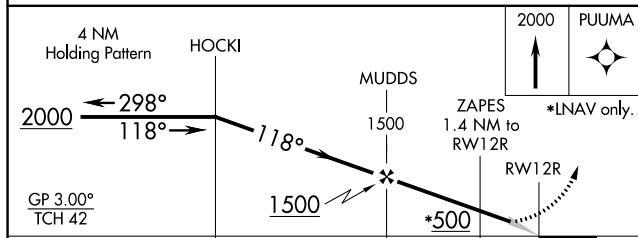
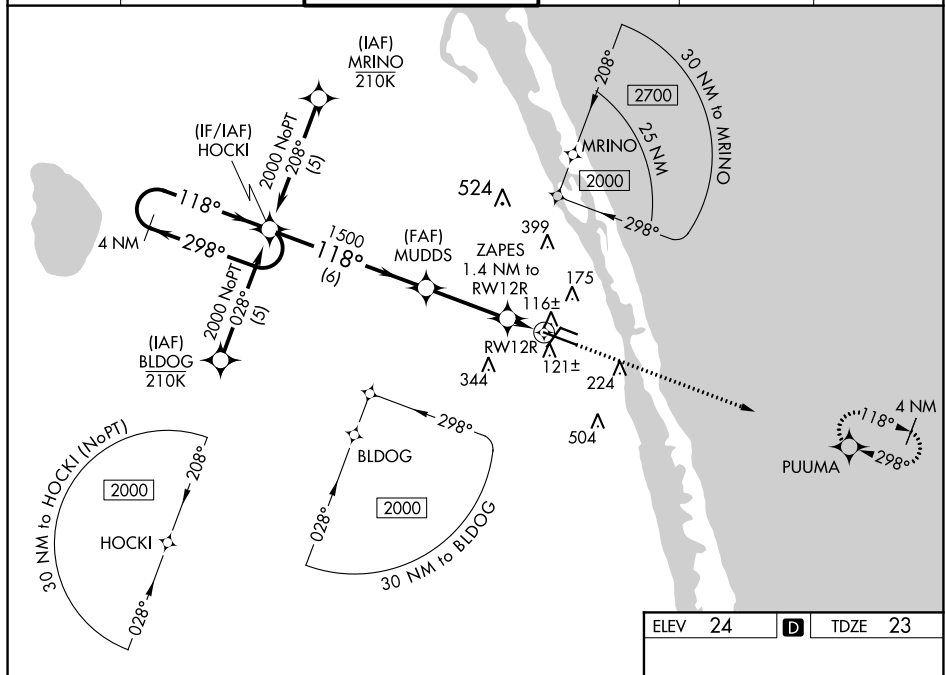
WAAS CH 53511 W12A	APP CRS 118°	Rwy Idg TDZE Apt Elev	7314 23 24
--	------------------------	-----------------------------	---------------------------------------

RNAV (GPS) RWY 12R
VERO BEACH RGNL (VRB)

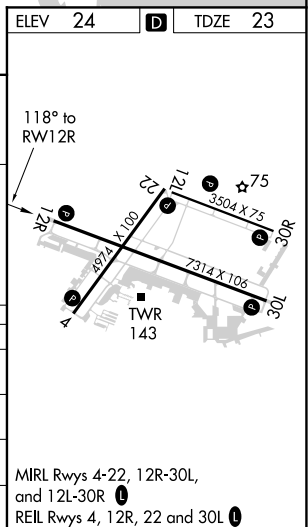
T **A** Circling to Rwy 30R NA at night. Baro-VNAV NA when using Fort Pierce altimeter setting. For uncompensated Baro-VNAV systems, LNAV/VNAV NA below 0°C (32°F) or above 54°C (130°F). DME/DME RNP-0.3 NA. When local altimeter setting not received, use Fort Pierce altimeter setting and increase all DA 23 feet and all MDA 40 feet and increase LNAV Cats C and D visibility $\frac{1}{8}$ mile and Circling Cat D visibility $\frac{1}{4}$ mile.

MISSED APPROACH:
Climb to 2000 direct
PUUMA and hold.

ATIS 120.575	PALM BEACH APP CON 123.625 225.4 (N)	VERO BEACH TOWER ★ 126.3 (CTAF) 0	GND CON 127.45	CLNC DEL 134.975	UNICOM 122.95
-----------------	---	--------------------------------------	-------------------	---------------------	------------------



CATEGORY		A	B	C	D
LPV	DA	279- ³ / ₄		256 (300- ³ / ₄)	
INAV/ VNAV	DA	294- ⁷ / ₈		271 (300- ⁷ / ₈)	
INAV	MDA	380-1		357 (400-1)	
CIRCLING		560-1	536 (600-1)	560-1 ¹ / ₂ 536 (600-1 ¹ / ₂)	660-2 636 (700-2)



RNAV (GPS) RWY 12R