

VALPARAISO, FLORIDA

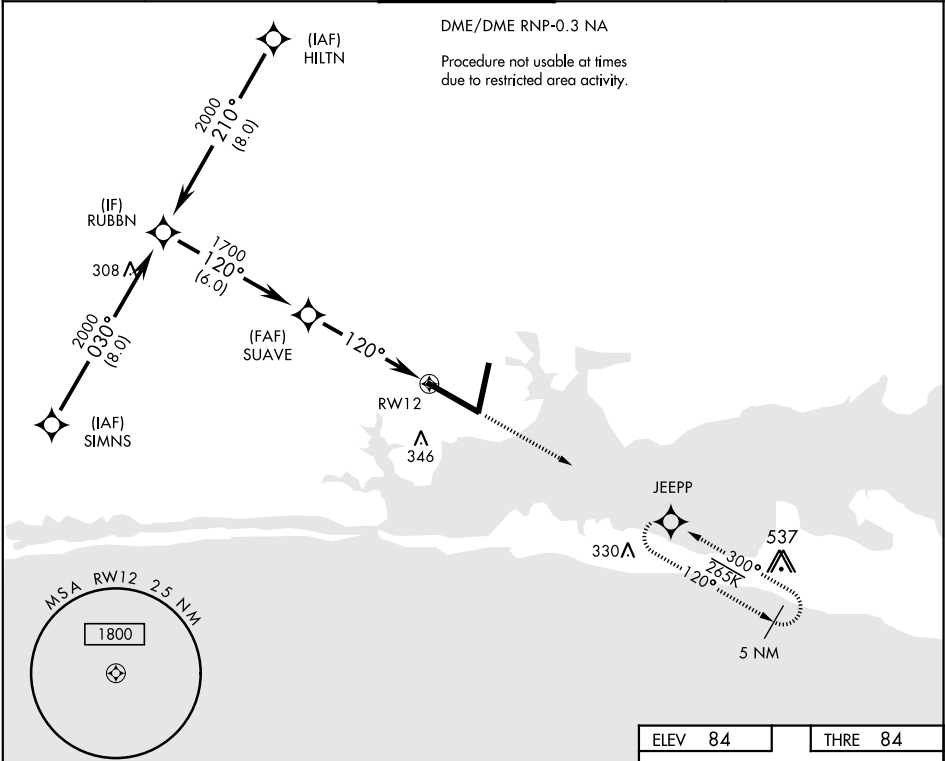
RNAV (GPS) RWY 12

APCH CRS	Rwy ldg
120°	11,987
THRE	84
Arpt Elev	84

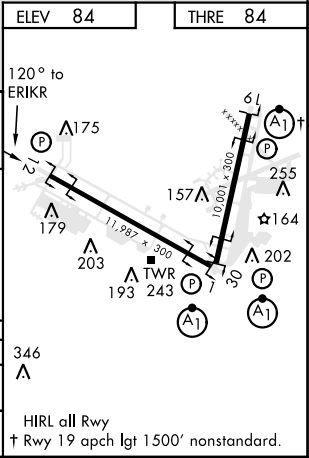
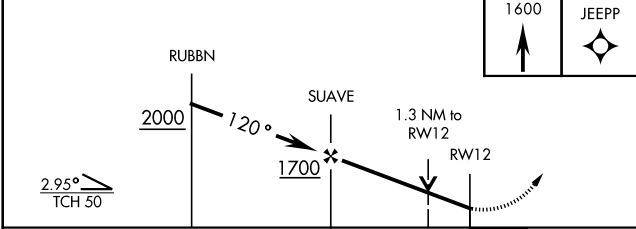
AL-436 [USAF] EGLIN AFB/DESTIN-FT WALTON BEACH(KVPS)

MISSED APPROACH: Climb straight ahead to 1600 to JEEPP and hold.

ATIS ★	EGLIN APP CON	EGLIN TOWER	GND CON	CLNC DEL
134.625 273.5	125.1 281.45 271°- 089° 132.1 360.6 090°- 270°	118.2 353.65	121.8 335.8	127.7 377.2



EMERG SAFE ALT 100 NM 3600



CATEGORY	A	B	C	D	E
LNAV MDA	540/55	456 (500-1)	540-1 3/8	456	(500-1 3/8)
CIRCLING	600-1	516 (600-1)	760-2 676 (700-2)	760-2 1/4 676 (700-2 1/4)	760-2 1/2 676 (700-2 1/2)

VALPARAISO, FLORIDA

30° 29' N-86° 32' W

EGLIN AFB/DESTIN-FT WALTON BEACH (KVPS)

Amtd 1 30MAY13

RNAV (GPS) RWY 12

SE-3, 31 DEC 2020 to 28 JAN 2021

SE-3, 31 DEC 2020 to 28 JAN 2021