

HI-TACAN RWY 12

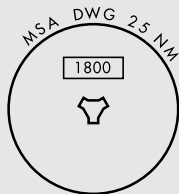
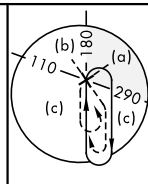
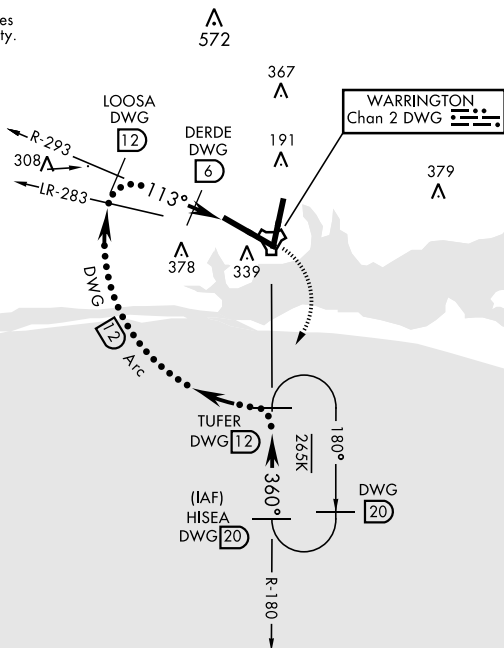
TACAN DWG Chan 2	APCH CRS 113°	Rwy Idg 11,987 THRE 84 Arpt Elev 84
---------------------	------------------	---

JAL-436 [USAF] EGLIN AFB/DESTIN-FT WALTON BEACH (KVPS)

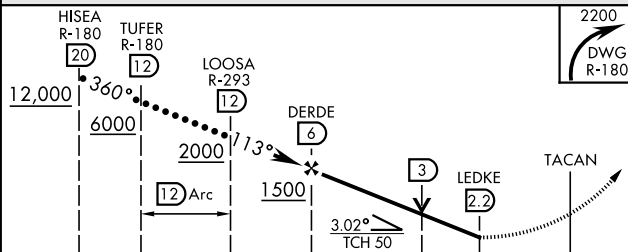
MISSED APPROACH: Climbing right turn to 2200 direct
TUFER DWG R-180/12 DME and hold.

ATIS ★	EGLN APP CON		EGLN TOWER	GND CON	CLNC DEL
134.625 273.5	125.1	281.45 271°-089°	118.2 353.65	121.8 335.8	127.7 377.2
	132.1	360.6 090°-270°			

Procedure not usable at times
due to restricted area activity.

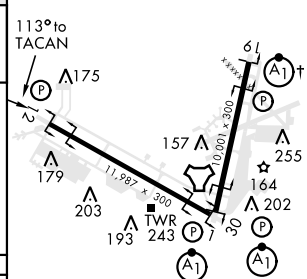


EMERG SAFE ALT 100 NM 3600



			3.8 NM	.5	
CATEGORY	C	D	E		
S-12	540-1 $\frac{3}{8}$		456 (500-1 $\frac{3}{8}$)		
CIRCLING	760-2 676 (700-2)	760-2 $\frac{1}{4}$ 676 (700-2 $\frac{1}{4}$)	760-2 $\frac{1}{2}$ 676 (700-2 $\frac{1}{2}$)		

ELEV	84		THRE	84
------	----	--	------	----



HIRL all Rwy
† Rwy 19 apch lgt 1500' nonstandard.

VALPARAISO, FLORIDA

30°29'N-86°32'W

EGLIN AFB/DESTIN-FT WALTON BEACH(KVPS)

HI-TACAN RWY 12

SE-3, 31 DEC 2020 to 28 JAN 2021

SE-3, 31 DEC 2020 to 28 JAN 2021