

APP CRS	Rwy Idg	8300
187°	TDZE	26
	Apt Elev	26

RNAV (RNP) Y RWY 19L

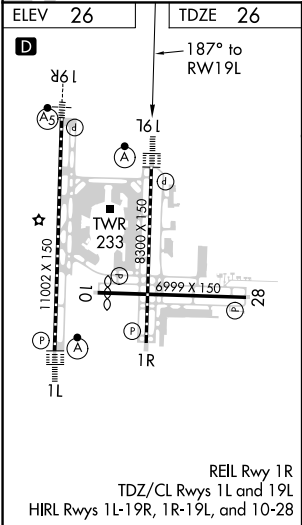
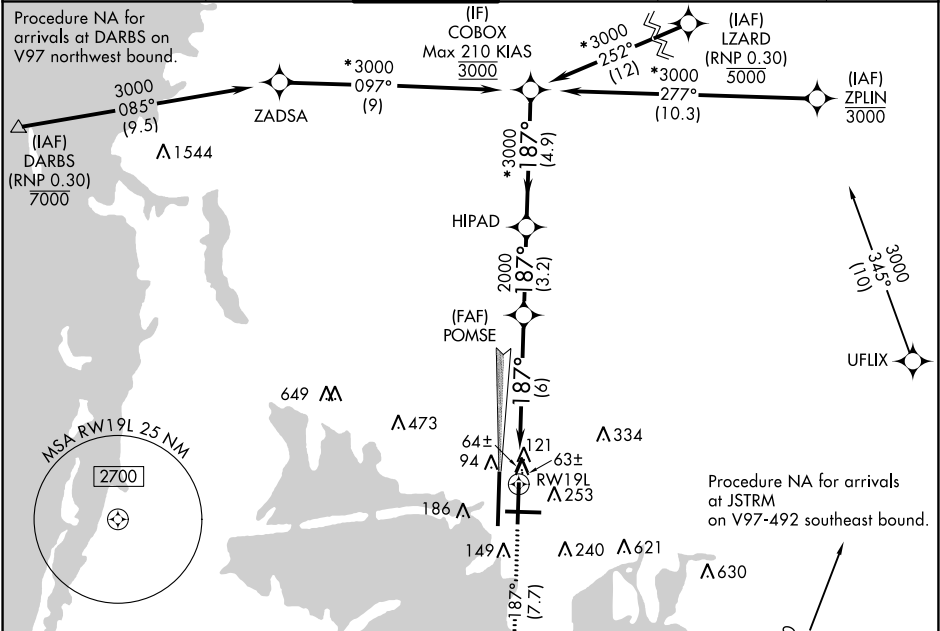
TAMPA INTL (TPA)

For uncompensated Baro-VNAV systems, procedure NA below 1°C (34°F) or above 49°C (120°F). GPS required. For inop ALSF, increase RNP 0.11 all Cats visibility to 1, RNP 0.23 all Cats visibility to 1½ and RNP 0.30 all Cats visibility to 1¾. Simultaneous approach authorized with Rwy 19R. Use of FD or AP providing RNAV track guidance required during simultaneous operations.

ALSF-2

MISSED APPROACH:
Climb to 2800 on track 187° to CUPUL and on track 147° to GIBBS and hold.

ARR	D-ATIS	DEP	TAMPA APP CON	TAMPA TOWER	GND CON	CLNC DEL	CPDLC
126.45		128.475	118.5 307.175	119.5 269.4	121.7 269.4	133.6	



MISSED APCH FIX

2800	CUPUL	tr 187°	GIBBS	tr 147°	POMSE	HIPAD	COBOX
					2000	3000	3000
					6 NM	3.2 NM	4.9 NM

CATEGORY	A	B	C	D
RNP 0.11 DA		329/24	303 (400-½)	
RNP 0.23 DA		368/32	342 (400-¾)	
RNP 0.30 DA		442/45	416 (500-¾)	

AUTHORIZATION REQUIRED

GP 3.00° TCH 51

SE-3, 31 DEC 2020 to 28 JAN 2021

SE-3, 31 DEC 2020 to 28 JAN 2021