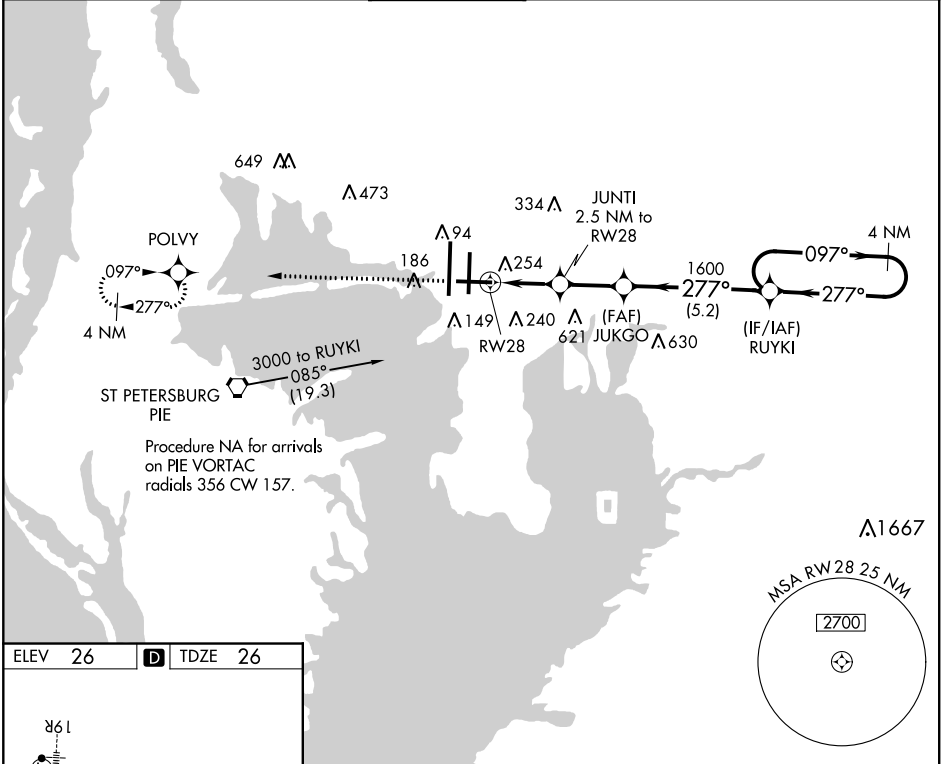


⚠

For uncompensated Baro-VNAV systems, LNAV/VNAV NA below -15°C (5°F) or above 43°C (109°F).
DME/DME RNP-0.3 NA. Helicopter visibility reduction below ¾ SM NA.

MISSED APPROACH: Climb to 2000 direct POLY and hold.

ARR 126.45	D-ATIS 128.475	TAMPA APP CON 118.5 307.175	TAMPA TOWER 119.5 269.4	GND CON 121.7 269.4	CLNC DEL 133.6	CPDLC
----------------------	--------------------------	---------------------------------------	-----------------------------------	-------------------------------	--------------------------	-------



ELEV 26

D

TDZE 26

REIL Rwy 1R
TDZ/CL Rwy 1L and 19L
HRL Rwy 1L-19R, 1R-19L, and 10-28

2000

POLY

* LNAV only.

JUKGO

1600

277°

1600

860*

2.5 NM

2.3 NM

5.2 NM

4 NM Holding Pattern

097°

277°

2000

GP 3.00°

TCH 50

CATEGORY	A	B	C	D
LPV DA		389-1½	363 (400-1½)	
LNAV/VNAV DA		468-1½	442 (500-1½)	
LNAV MDA	520-1	494 (500-1)	520-1¾	494 (500-1¾)
C CIRCLING	560-1	534 (600-1)	680-1¾ 654 (700-1¾)	980-3 954 (1000-3)