

BAYPO EIGHT DEPARTURE (RNAV)

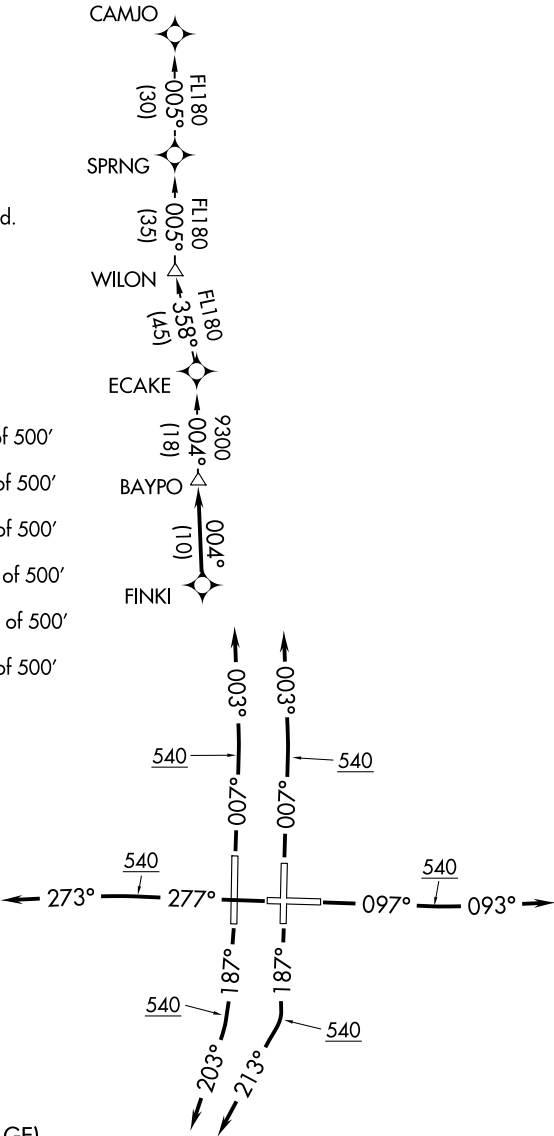
D-ATIS DEP
128.475
CLNC DEL
133.6
CPDLC
GND CON
121.7 269.4
TAMPA TOWER
119.5 269.4
TAMPA DEP CON
118.8 239.3

TOP ALTITUDE:
6000

- NOTE: RNAV 1.
NOTE: Turbojets only.
NOTE: RADAR required.
NOTE: DME/DME/IRU or GPS required.

TAKEOFF MINIMUMS:

- Rwy 1L: Standard with minimum climb of 500' per NM to 2600.
Rwy 1R: Standard with minimum climb of 500' per NM to 2400.
Rwy 10: Standard with minimum climb of 500' per NM to 2000.
Rwy 19L: Standard with minimum climb of 500' per NM to 2100.
Rwy 19R: Standard with minimum climb of 500' per NM to 2000.
Rwy 28: Standard with minimum climb of 500' per NM to 2100.



(NARRATIVE ON FOLLOWING PAGE)

NOTE: Chart not to scale.