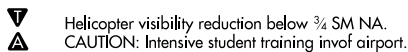


NUN VOR	APP CRS	Rwy Idg	7000
108.8	089°	TDZE	97
		Apt Elev	121

APP CR
089°

Rwy Idg	7000
TDZE	97
Apt Elev	121

VOR RWY 8
PENSACOLA INTL (PNS)



MISSED APPROACH: Climb to 2000 then climbing left turn to 2600 direct NUN VOR and hold.

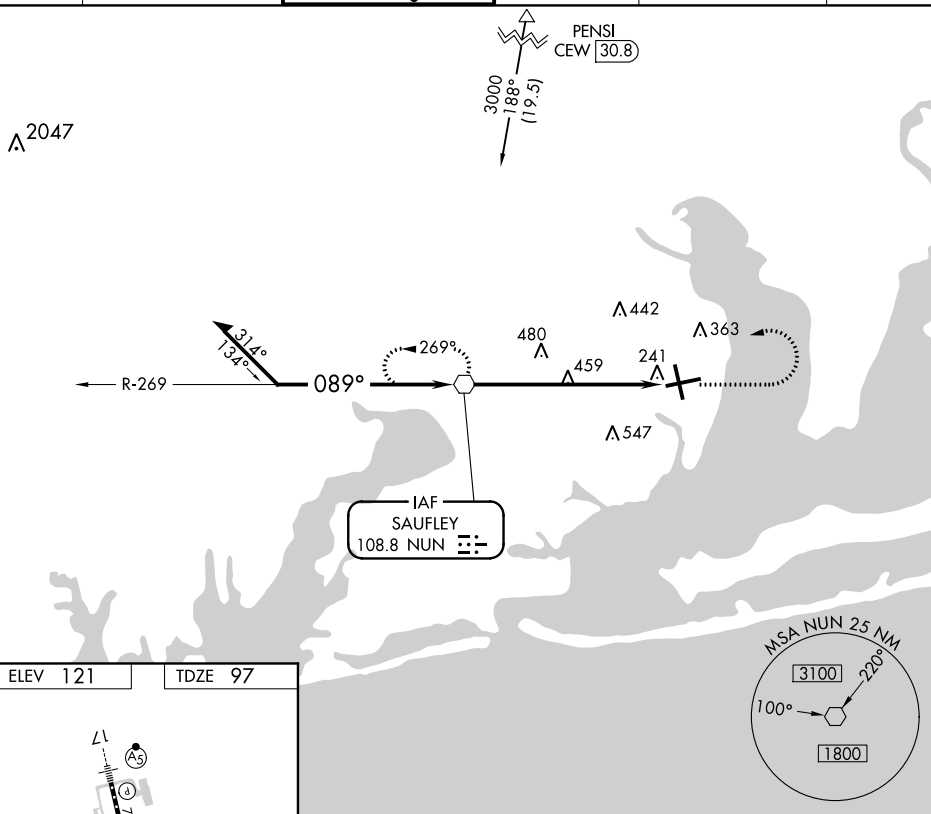
ATIS
121.25

PENSACOLA APP CON
119.0 269.375

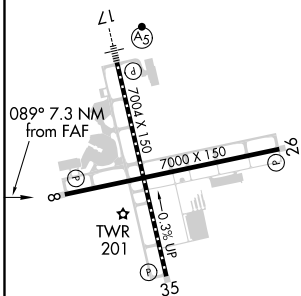
PENSACOLA TOWER ★
119.9 (CTAF) **L** 257.8

GND CON	
121.9	348.6

CLNC DEL
123,725 256,875

UNICOM
122.95

ELEV 121		TDZE 97
----------	--	---------



REIL Rwy 8, 26 and 35
TDZ/CL Rwy 17

FAF to MAP 7.3 NM

FAF to MAP 7.3 NM

Knots	60	90	120	150	180
Min:Sec	7:18	4:52	3:39	2:55	2:26

