

WAAS CH <b>40020</b> <b>W35A</b>	APP CRS <b>349°</b>	Rwy Idg <b>7004</b> TDZE <b>103</b> Apt Elev <b>121</b>
--	------------------------	---

# RNAV (GPS) RWY 35

## PENSACOLA INTL (PNS)

RNP APCH.

**T** For uncompensated Baro-VNAV systems, LNAV/VNAV NA below 1°C or above 54°C. CAUTION: Intensive VFR student training in vicinity of airport.

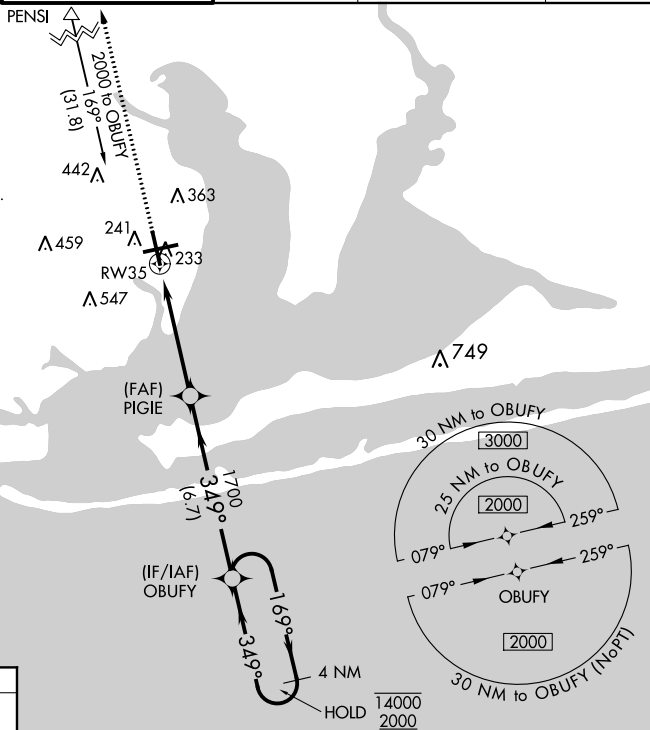
**MISSED APPROACH:** Climb to 2700 direct WABEN and hold.

ATIS 121.25	PENSACOLA APP CON 119.0 269.375	PENSACOLA TOWER ★ 119.9 (CTAF) 0 257.8	GND CON 121.9 348.6	CLNC DEL 123.725 256.875	UNICOM 122.95
----------------	------------------------------------	---	------------------------	-----------------------------	------------------

MISSED APCH FIX

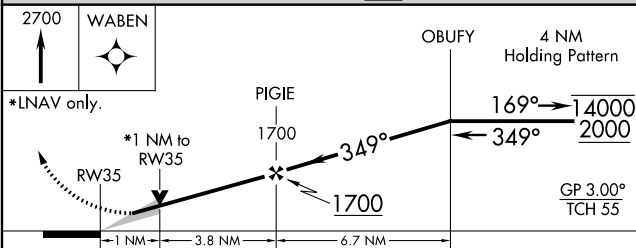
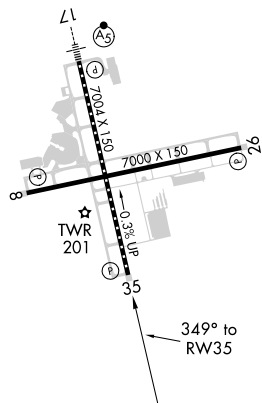


Procedure NA for arrivals at  
PENSI on V198-241 westbound.



ELEV	121		TDZE	103
------	-----	--	------	-----

REIL Rwy 8, 26 and 35  
TDZ/CL Rwy 17 **L**  
HIRL Rwy 8-26 and 17-35 **L**



CATEGORY	A	B	C	D
LPV DA	303/40 200 (200-¾)			
LNAV/VNAV DA	384/45 281 (300-⅞)			
LNAV MDA	480/55 377 (400-1)			
CIRCLING	580-1 459 (500-1)	680-1 559 (600-1)	680-1½ 559 (600-1½)	680-2 559 (600-2)