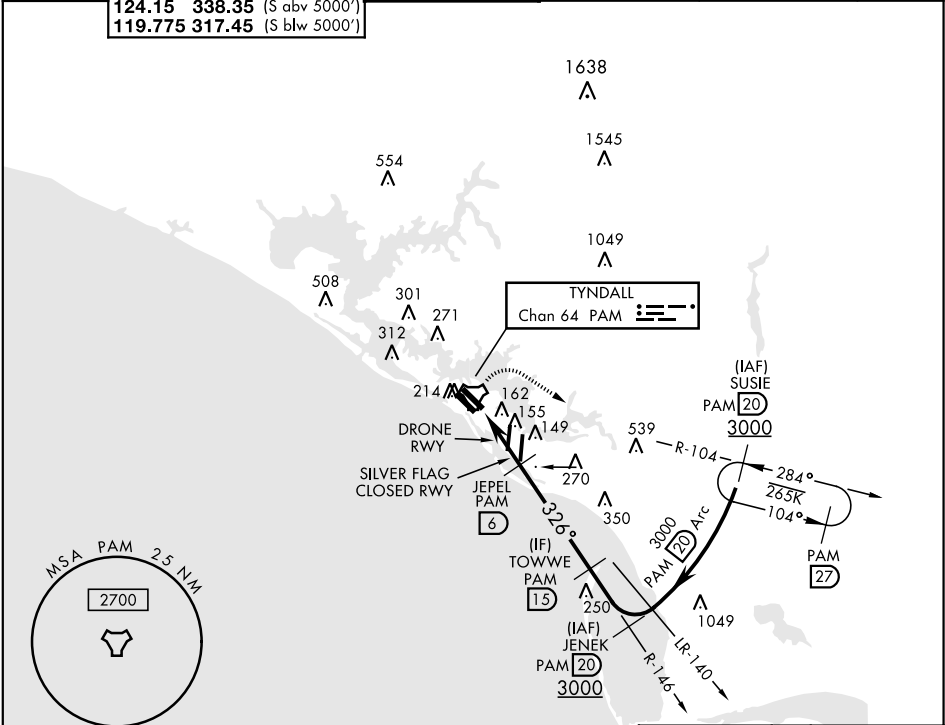


PANAMA CITY, FLORIDA

TACAN Z Rwy 32R

TACAN PAM Chan 64	APCH CRS 326°	Rwy ldg 10,008 TDZE 14 Arpt Elev 17	AL-312 [USAF]	TYNDALL AFB (KPAM)
* When ALS inop, increase CAT AB RVR to 55, vis to 1 mile; CAT CDE vis to 1 3/8 miles.				
ATIS ★ 254.4	TYNDALL APP CON 125.2 392.1 (N abv 5000') 120.825 379.3 (N blw 5000') 124.15 338.35 (S abv 5000') 119.775 317.45 (S blw 5000')	TYNDALL TOWER ★ 133.95 263.15	GND CON 121.9 259.3	CLNC DEL 118.05 348.7
ASR/PAR				



EMERG SAFE ALT 100 NM 3300

3000 PAM R-104	SUSIE PAM 20	VGSI and descent angles not coincident (VGSI angle 2.50/TCH 50).
-------------------	--------------	--

TOWWE 15 2100

JEPPEL 6 1600

ZOMAB 2.4 1.5

TACAN

5 NM 4.5 NM

2.87° TCH 50

CATEGORY	A	B	C	D	E
S-32R*	460/24	446 (500-1/2)	460/45	446 (500-7/8)	
CIRCLING	540-1	523 (600-1)	560-1 1/2 543 (600-1 1/2)	580-2 563 (600-2)	620-2 1/4 603 (700-2 1/4)

ELEV 17 TDZE 14

HIRL all Rwy Rwy 32L ldg 9135'

14L 14R 10.08 x 200 10.13 x 120 131 122 173 TWR 148 158 32L 152R 326° 5 NM from FAF

Recommend Rwy 14L-32R for apch end engagement of A-Gear.

TACAN Z Rwy 32R

SE-3, 31 DEC 2020 to 28 JAN 2021

SE-3, 31 DEC 2020 to 28 JAN 2021