

PANAMA CITY, FLORIDA

RNAV (GPS) RWY 32R

WAAS CH 52209 W32A	APCH CRS 319°	Rwy Idg 10,008 TDZE 14 Arpt Elev 17
---------------------------------	------------------	--

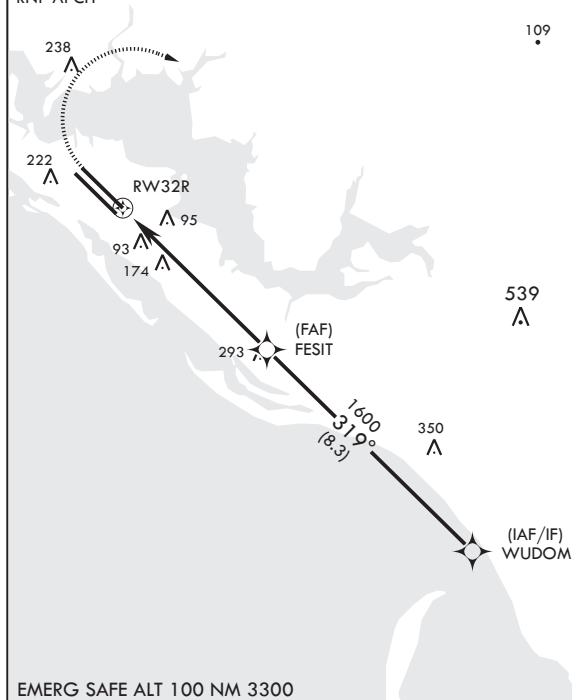
AL-312 (USAF)

TYNDALL AFB (KPAM)

<p> T * When ALS inop increase CAT ABCDE RVR to 40, vis to 3/4 mile. ** When ALS inop increase CAT ABCDE RVR to 55, vis to 1 mile. *** When ALS inop increase CAT AB RVR to 55, vis to 1 mile, CAT CDE vis to 1 3/8 miles. </p>	<p> ALS-F-1 </p>	<p> MISSED APPROACH: Climb to 600 then climbing right turn to 3000 direct SUSIE and hold. </p>
--	------------------------------	---

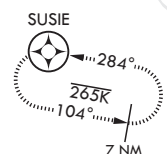
ATIS★ 254.4	APP CON/DEP CON 119.775 317.45 BLW 5000' 124.15 338.35 ABV 5000'	TOWER★ 133.95 263.15	GND CON 121.9 259.3	CLNC DEL 118.05 348.7	ASR/PAR
----------------	--	-------------------------	------------------------	--------------------------	---------

RNP APCH

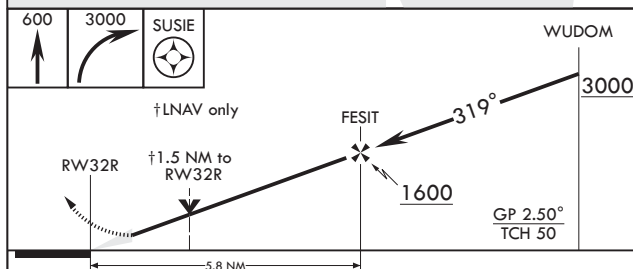



For uncompensated Baro-VNAV systems, Procedure NA below 15°C (59°F) or above 54°C (130°F).

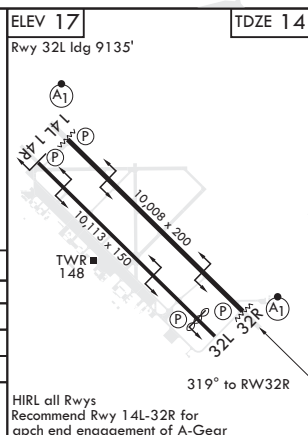
Average Cold Temperature
based on standard
-30.00°C ISA deviation.



EMERG SAFE ALT 100 NM 3300



CATEGORY	A	B	C	D	E
LPV DA*	214/24		200	(200-1/2)	
LNAV/VNAV DA**	389/35		375	(400-%)	
LNAV MDA***	460/24	446 (500-1/2)	460/45	446	(500-%)
 CIRCLING	540-1	523 (600-1)	560-1 1/2 543 (600-1 1/2)	580-2 563 (600-2)	620-2 1/4 603 (700-2 1/4)



PANAMA CITY, FLORIDA

30°04'N - 85°34'W

TYNDALL AFB (KPAM)

Amdt 2 12SEP19

RNAV (GPS) RWY 32R

SE-3, 31 DEC 2020 to 28 JAN 2021

SE-3, 31 DEC 2020 to 28 JAN 2021