

ILS or LOC Z RWY 14L

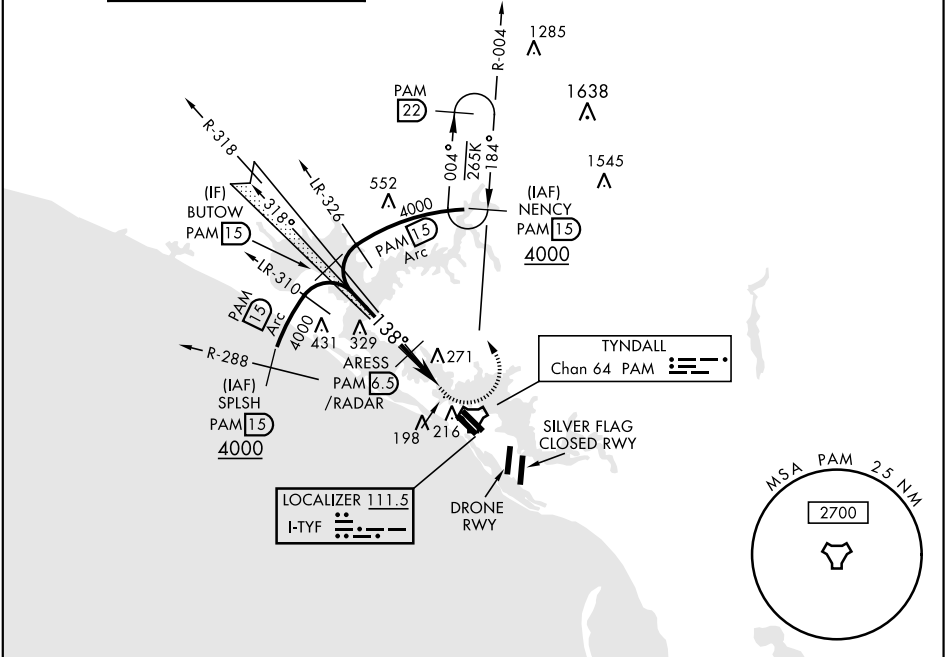
LOC I-TYF	APCH CRS	Rwy Idg
111.5	138°	10,008
		TDZE
		14
		Arpt Elev
		17

AL-312 [USAF]

TYNDALL AFB (KPAM)

DME or RADAR required.	ALSIF-1	MISSED APPROACH: Climbing left turn to 3000, intercept PAM TACAN R-004 to 15 DME (NENCY) and hold.
▼ * When ALS inop, increase RVR to 40 and vis to ¾ mile. ** When ALS inop, increase CAT AB RVR to 55, vis to 1 mile; CAT CDE vis to 1 ½ miles.	A1	

ATIS ★	TYNDALL APP CON	TYNDALL TOWER ★	GND CON	CLNC DEL	ASR/PAR
254.4	125.2 392.1 (N abv 5000') 120.825 379.3 (N blw 5000') 124.15 338.35 (S abv 5000') 119.775 317.45 (S blw 5000')	133.95 263.15	121.9 259.3	118.05 348.7	



EMERG SAFE ALT 100 NM 3300

BUTOW 15		ARESS /RADAR 6.5		3000 PAM R-004		NENCY PAM 15	
4000		138°		↑ LOC ONLY		HRL Rwy 14L-32R, 14R-32L Rwy 32L Idg 9135'	
GS 2.50° TCH 51		1600		TACAN		Recommend Rwy 14L-32R for apch end engagement of A-Gear.	
CATEGORY		A		B		C	
S-ILS 14L *		214/24		200		(200-½)	
S-LOC 14L **		420/40		406		(500-¾)	
CIRCLING		540-1 523 (600-1)		560-1½ 543 (600-1½)		580-2 563 (600-2)	
						620-2¼ 603 (700-2¼)	
						Knots	
						60 90 120 150 180	
						Min:Sec	
						5:18 3:32 2:39 2:07 1:46	

ILS or LOC Z RWY 14L