

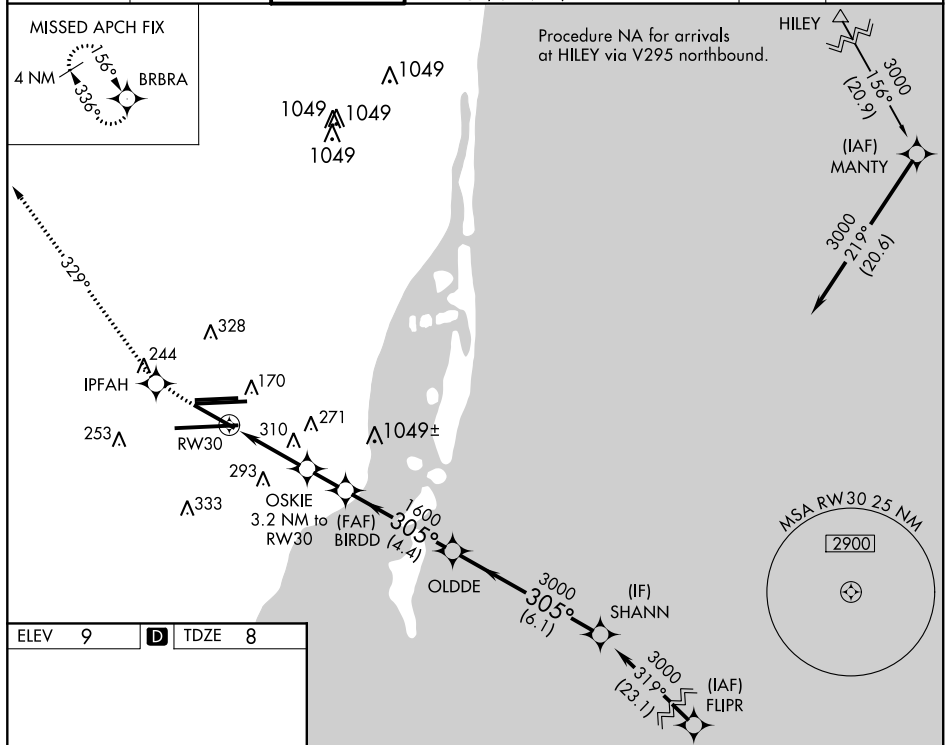
19115

RNAV (GPS) Z RWY 30
MIAMI INTL (MIA)

MALS

MISSED APPROACH: Climb to 3000 direct
IPFAH and via 329° track to BRBRA and hold.

ARR	D-ATIS	MIAMI APP CON		MIAMI TOWER		GND CON		CLNC DEL	CPDLC
DEP	119.15 133.675	124.85	322.3	118.3	256.9	121.8 127.5	(8L/8R/12/26L/26R) (9/27/30) 348.6	135.35	



MIAMI INTL (MIA)
RNAV (GPS) Z RWY 30

SE-3, 31 DEC 2020 to 28 JAN 2021