

MIAMI, FLORIDA

AL-257 (FAA)

19115

WAAS CH 40205 W27A	APP CRS 272°	Rwy Idg 12755 TDZE 8 Apt Elev 9
--	------------------------	--

RNAV (GPS) Z RWY 27

MIAMI INTL (MIA)

▼ For uncompensated Baro-VNAV systems, LNAV/VNAV NA below 6°C (43°F) or above 54°C (130°F). DME/DME RNP-0.3 NA. For inop MALSR, increase LPV Cat E visibility to RVR 4000, LNAV/VNAV all Cats visibility to 1½ mile, and LNAV Cat E visibility to 1½ mile. **RVR 1800 authorized with use of FD or AP or HUD to DA.

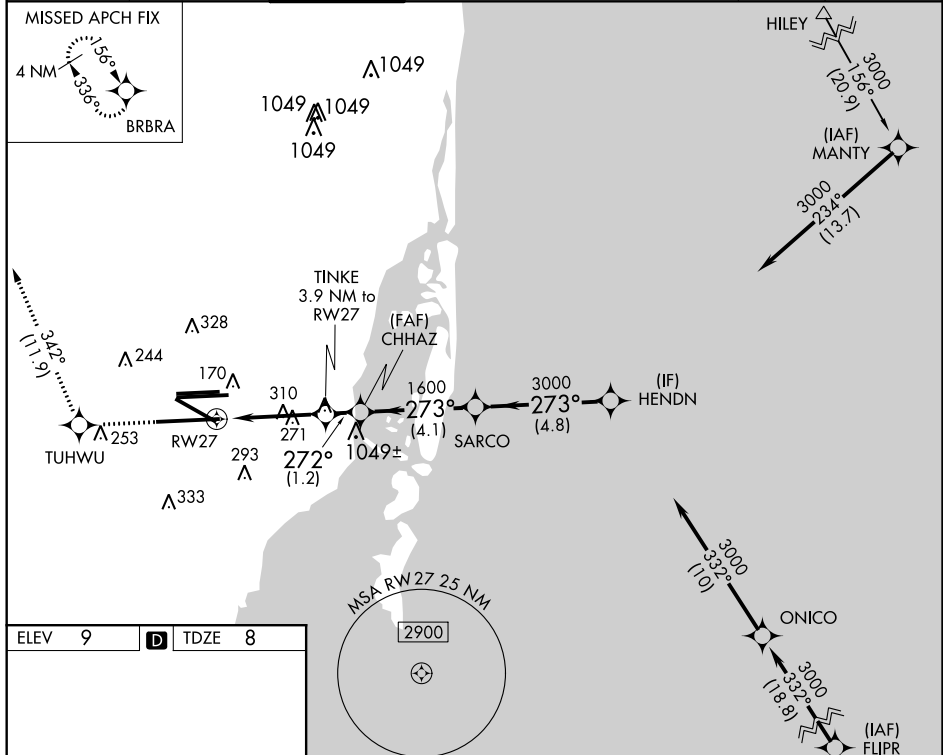
MALSR



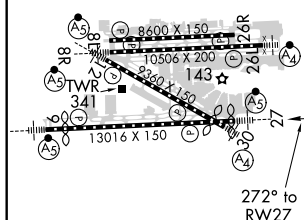
MISSED APPROACH:
Climb to 2000 direct
TUHWU and on track
342° to BRBRA and hold.

ARR	D-ATIS	MIAMI APP CON		MIAMI TOWER		GND CON		CLNC DEL	CPDLC
DEP	119.15 133.675	124.85	322.3	118.3	256.9	121.8 127.5	(8L/8R/12/26L/26R) (9/27/30) 348.6	135.35	

MISSED APCH FIX



ELEV	9	D	TDZE	8
------	---	----------	------	---



TDZ/CL Rwy 8R
REIL Rwy 8L and 26R
HIRL all Rwy

2000 ↑	TUHWU ✧	tr 342°	BRBRA ✧	VGSI and RNAV glidepath not coincident (VGSI Angle 3.00/TCH 71).				
*LNAV only.				CHHAZ 1700	SARCO 3000	HENDN 3000		
				<p>TINKE 3.9 NM to RW27</p> <p>*1300</p> <p>1700</p> <p>3000</p> <p>GP 3.00° TCH 55</p>				
CATEGORY	A		B		C	D		E
LPV DA**			208/24		200 (200-½)			
LNAV/ VNAV	DA				440/50 432 (500-1)			
LNAV MDA	560/24	552 (600-½)		560/60		552 (600-1½)		

MIAMI, FLORIDA

Amdt 3A 17AUG17

25°48'N-80°17'W

MIAMI INTL (MIA)

RNAV (GPS) Z RWY 27

SE-3, 31 DEC 2020 to 28 JAN 2021