

WAAS CH 81905 W26B	APP CRS 272°	Rwy Idg 10220 TDZE 8 Apt Elev 9
--	------------------------	--

RNAV (GPS) Z RWY 26L

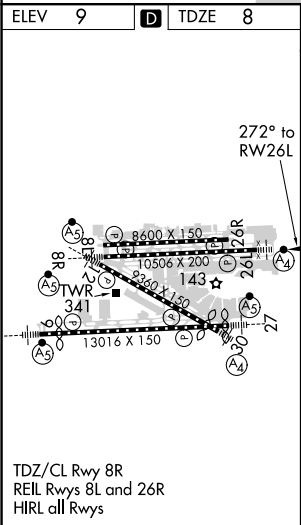
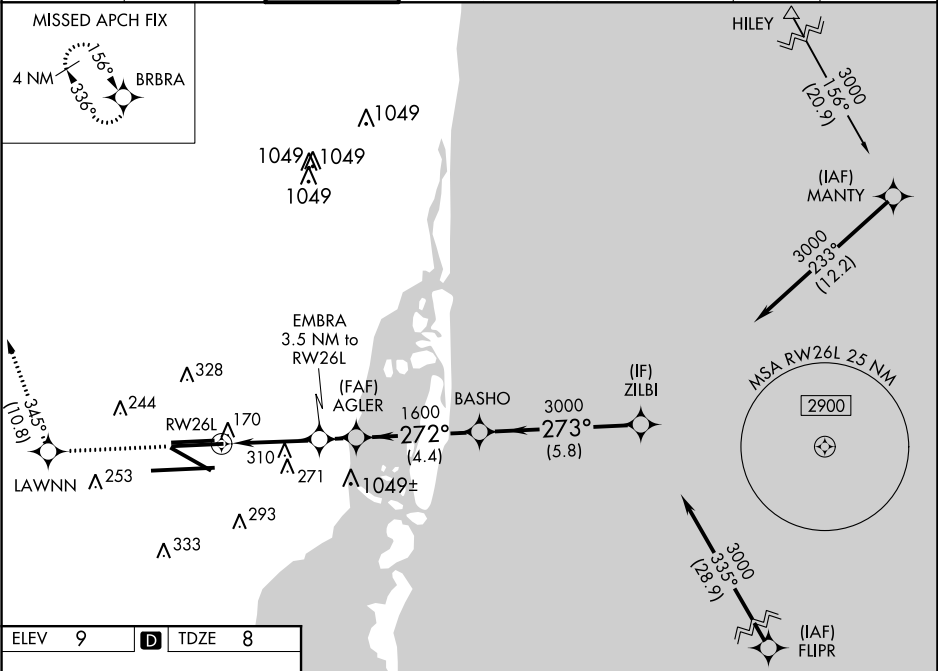
MIAMI INTL (MIA)

Inop table does not apply to LPV all Cats. For uncompensated Baro-VNAV systems, LNAV/VNAV NA below 6°C (43°F) or above 54°C (130°F). DME/DME RNP-0.3 NA. For inop MALSF, increase LNAV/VNAV Cat D visibility to RVR 6000 and LNAV Cat D visibility to 1½ mile.

MALSF

MISSED APPROACH: Climb to 2000 direct LAWNN and on track 345° to BRBRA and hold.

D-ATIS ARR 119.15 DEP 133.675	MIAMI APP CON 124.85 322.3	MIAMI TOWER 118.3 256.9	GND CON 121.8 (8L/8R/12/26L/26R) 127.5 (9/27/30)	348.6	CLNC DEL 135.35	CPDLC
---	--------------------------------------	-----------------------------------	--	--------------	---------------------------	-------



2000	LAWNN	tr 345°	BRBRA	VGSI and descent angles not coincident (VGSI Angle 3.00/TCH 73).			
*LNAV only.				AGLER	BASHO	ZILBI	
EMBRA 3.5 NM to RW26L				1600	272°		273°
*1.5 NM to RW26L				*1180	3000	3000	
RW26L				1600	GP 3.00°		TCH 58
1.5				2 NM	1.3 NM	4.4 NM	5.8 NM
CATEGORY	A		B		C		D
LPV DA	208/40		200 (200-¾)				
LNAV/VNAV DA	348/45		340 (400-¾)				
LNAV MDA	560/40	552 (600-¾)	560-1⅓		552 (600-1⅓)		

SE-3, 31 DEC 2020 to 28 JAN 2021

SE-3, 31 DEC 2020 to 28 JAN 2021