

19115

APP CRS <b>092°</b>	Rwy Idg <b>10506</b> TDZE <b>8</b> Apt Elev <b>9</b>
------------------------	--

RNAV (RNP) Y RWY 8R  
MIAMI INTL (MTA)

**T** For uncompensated Baro-VNAV systems, procedure NA below 6°C (43°F) or above 54°C (130°F). GPS required. For inop MALS, increase RNP 0.11 all Cats visibility to 1¼ mile.

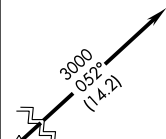
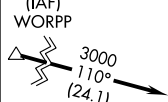
\*Missed approach requires minimum climb of 330 feet per NM to 600.



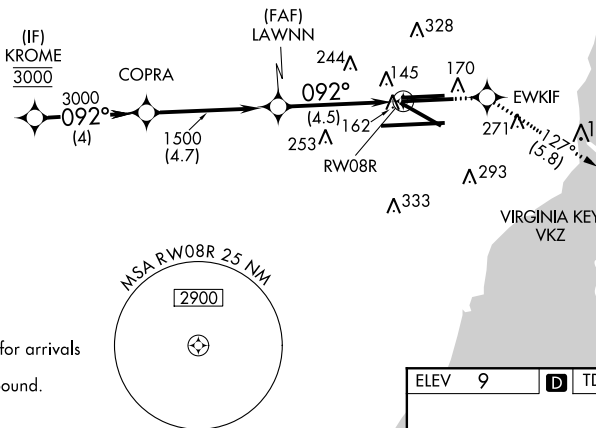
**MISSED APPROACH:** Climb to 3000 direct EWKIF and on track 127° to VKZ VOR/DME and hold, continue climb-in-hold to 3000.

D-ATIS	MIAMI APP CON	MIAMI TOWER	GND CON		CINC DEL	CPDLC
ARR DEP	119.15 133.675	124.85 322.3 118.3 256.9	121.8 127.5	(8L/8R/12/26L/26R) (9/27/30)	348.6 135.35	

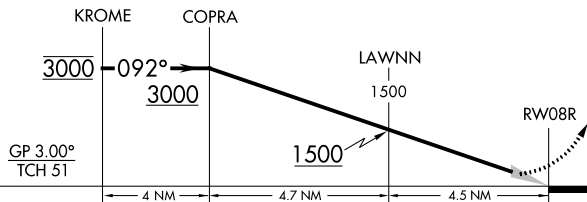
Procedure NA for arrivals  
at WORPP  
on V529 northwest bound, V35 westbound.



Procedure NA for arrivals  
at FOGSO  
on V157 westbound.

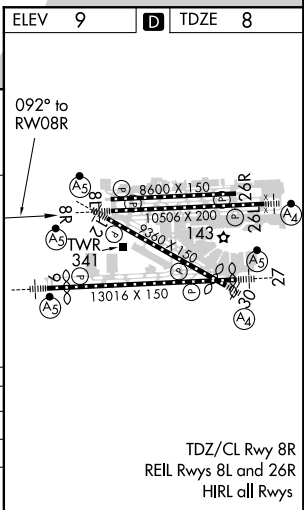


VGSI and RNAV glidepath not coincident  
(VGSI Angle 3.00/TCH 77).



CATEGORY	A	B	C	D
*RNP 0.11 DA		397/45	389 (400-7%)	
RNP 0.30 DA		458/50	450 (500-1)	

## AUTHORIZATION REQUIRED



MIAMI, FLORIDA  
Orig-B 15OCT15

25°48'N-80°17'W

MIAMI INTL (MTA)

## RNAV (RNP) Y RWY 8R

SE-3, 31 DEC 2020 to 28 JAN 2021