

MIAMI, FLORIDA

AL-257 (FAA)

19115

APP CRS	Rwy Idg	12755
272°	TDZE	8
	Apt Elev	9

RNAV (RNP) Y RWY 27

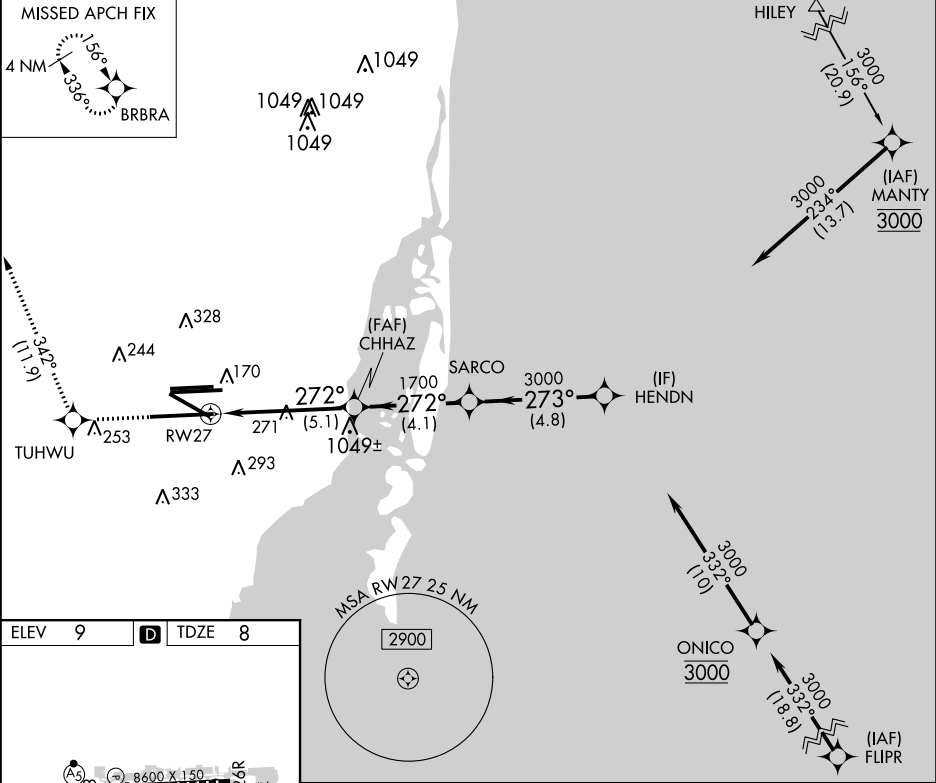
MIAMI INTL (MIA)

For uncompensated Baro-VNAV systems, procedure NA below 6°C (43°F) or above 54°C (130°F). GPS Required.
For inop MALS, increase RNP 0.11 all Cats visibility to RVR 5000 and RNP 0.30 all Cats visibility to 1¼ mile.

MALS

MISSED APPROACH: Climb to 2000 direct TUHWU and on track 342° to BRBRA and hold.

D-ATIS	MIAMI APP CON	MIAMI TOWER	GND CON	CLNC DEL	CPDLC
ARR 119.15 DEP 133.675	124.85 322.3	118.3 256.9	121.8 (8L/8R/12/26L/26R) 127.5 (9/27/30)	348.6	



ELEV 9 TDZE 8

D

TDZ/CL Rwy 8R
REIL Rwy 8L and 26R
HIRL all Rwy

2000	TUHWU	BRBRA	VGSI and RNAV glidepath not coincident (VGSI Angle 3.00/TCH 71).		
↑	tr 342°		SARCO	HENDN	
		CHHAZ 1700	272° 3000	273° 3000	GP 3.00° TCH 55
			1700		
			5.1 NM	4.1 NM	4.8 NM
CATEGORY	A	B	C	D	E
RNP 0.11 DA			336/30	328 (400-5%)	
RNP 0.30 DA			408/45	400 (400-7%)	
AUTHORIZATION REQUIRED					

MIAMI, FLORIDA
Amdt 2A 13OCT16

25°48'N-80°17'W

MIAMI INTL (MIA)

RNAV (RNP) Y RWY 27

SE-3, 31 DEC 2020 to 28 JAN 2021

SE-3, 31 DEC 2020 to 28 JAN 2021