

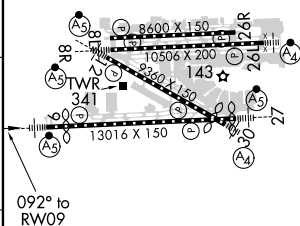
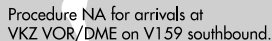
19115

RNAV (GPS) RWY 9
MIAMI INTL (MIA)

MALSR

MISSED APPROACH:
Climb to 800 then
climbing right turn to
3000 direct VKZ
VOR/DME and hold,
continue climb-in-hold
to 3000.

CAUTION: Lights on highway ¼ mile south of final approach course may be mistaken for runway.



TDZ/CL Rwy 8R
REIL Rwys 8L and 26R
HIRL all Rwys

MIAMI INTL(MIA)
RNAV (GPS) RWY 9

SE-3, 31 DEC 2020 to 28 JAN 2021