

MIAMI, FLORIDA

AL-257 (FAA)

20086

WAAS CH <b>86903</b> <b>W26A</b>	APP CRS <b>272°</b>	Rwy Idg <b>8600</b> TDZE <b>8</b> Apt Elev <b>9</b>
--	------------------------	---

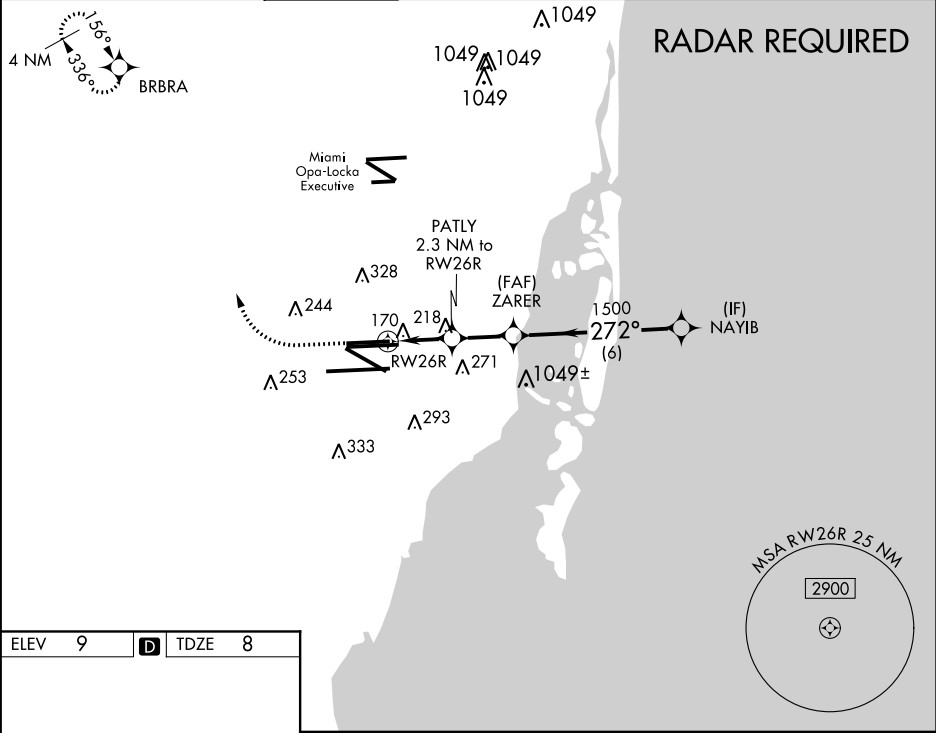
RNAV (GPS) RWY 26R

MIAMI INTL (MIA)

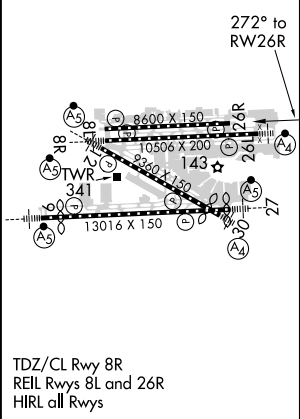
**⚠** For uncompensated Baro-VNAV systems, LNAV/VNAV NA below 6°C (43°F) or above 54°C (130°F). Simultaneous approach authorized with ILS or LOC RWY 27. DME/DME RNP-0.3 NA. LNAV procedure NA during simultaneous operations. Use of FD or AP providing RNAV track guidance required during simultaneous operations.




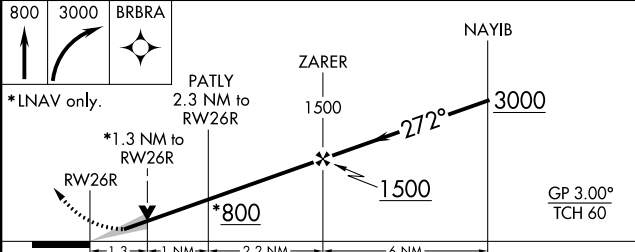
MISSED APPROACH: Climb to 800 then climbing right turn to 3000 direct BRBRA and hold.

D-ATIS ARR <b>119.15</b> DEP <b>133.675</b>	MIAMI APP CON <b>124.85 322.3</b>	MIAMI TOWER <b>118.3 256.9</b>	GND CON <b>121.8</b> (8L/8R/12/26L/26R) <b>127.5</b> (9/27/30)	<b>348.6</b>	CLNC DEL <b>135.35</b>	CPDLC
---	--------------------------------------	-----------------------------------	--	--------------	---------------------------	-------



ELEV <b>9</b>	<b>D</b>	TDZE <b>8</b>
---------------	----------	---------------



800	3000	BRBRA			
					
*LNAV only.					
					
CATEGORY	A		B	C	D
LPV	DA	265- $\frac{3}{4}$		257 (300- $\frac{3}{4}$ )	
LNAV/ VNAV	DA	433-1 $\frac{3}{8}$		425 (500-1 $\frac{3}{8}$ )	
LNAV MDA	480-1	472 (500-1)		480-1 $\frac{3}{8}$	472 (500-1 $\frac{3}{8}$ )

MIAMI, FLORIDA  
Amdt 3 21JUL16

25°48'N-80°17'W

MIAMI INTL (MIA)

RNAV (GPS) RWY 26R

SE-3, 31 DEC 2020 to 28 JAN 2021

SE-3, 31 DEC 2020 to 28 JAN 2021