

ILS or LOC RWY 8R
MIAMI INTL (MIA)

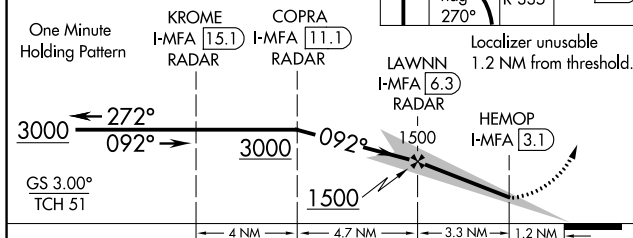
MALSR

MISSED APPROACH: Climb to 800 then climbing left turn to 3000 on heading 270° and on DHP VORTAC R-335 to BRBRA/DHP 11.5 DME and hold.

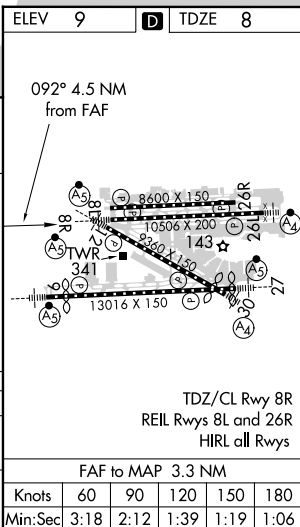
The chart depicts the Norfolk Island region with the following details:

- VOR Stations:**
 - 1049 (Norfolk Island) at 1049°
 - 1049± (Norfolk Island) at 1049°
 - 271 (Norfolk Island) at 271°
 - 293 (Norfolk Island) at 293°
- DME/Radar Stations:**
 - KROME (IF/IAF) at 15.1 miles, 092° bearing.
 - COPRA (I-MFA) at 11.1 miles, 092° bearing.
 - HEMOP (I-MFA) at 3.1 miles, 271° bearing.
 - LAWNN (I-MFA) at 6.3 miles, 092° bearing.
 - DOLPHIN (DHP) at 113.9 miles, Chan 86.
 - LOCALIZER 110.3 (I-MFA) at 40 miles, Chan 40.
- Other Features:**
 - MSA DHP 25 NM (Minimum Safe Altitude).
 - BRBRA (Barometric Reference).
 - Various navigational aids and symbols for landing, communication, and terrain.

800 ↑	3000 hdg 270°	DHP R-335	BRBRA DHP 11.5
----------	---------------------	--------------	-------------------



CATEGORY	A	B	C	D
S-ILS 8R	450/50 442 (500-1)			
S-LOC 8R	560/50 552 (600-1)			560/60 552 (600-1¼)



SE-3 31 DEC 2020 to 28 JAN 2021