

MIAMI, FLORIDA

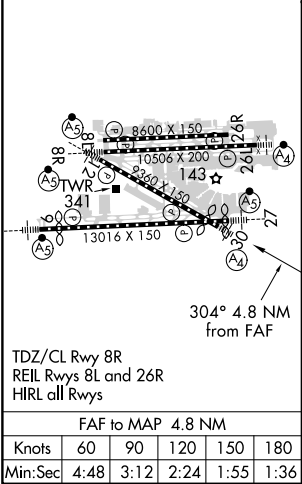
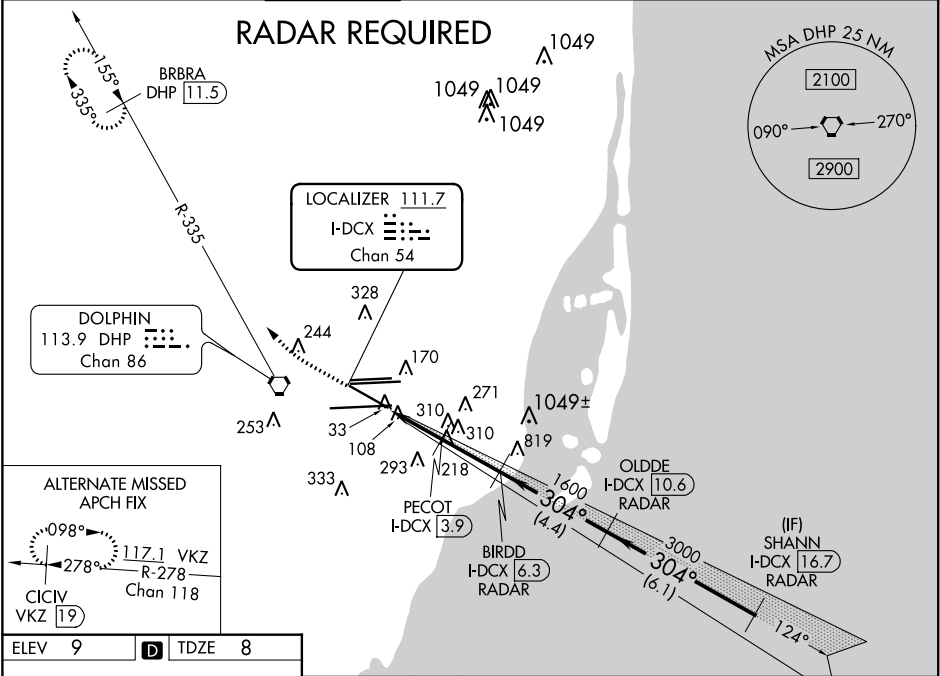
AL-257 (FAA)

20254

LOC/DME I-DCX <b>111.7</b> Chan <b>54</b>	APP CRS <b>304°</b>	Rwy Idg TDZE Apt Elev <b>7913</b> <b>8</b> <b>9</b>
-------------------------------------------------	------------------------	--------------------------------------------------------------------

ILS or LOC RWY 30  
MIAMI INTL (MIA)

DME required. Inop table does not apply.			MALS 	MISSED APPROACH: Climb to 800 then climbing right turn to 2000 on heading 310° and DHP VORTAC R-335 to BRBRA/11.5 DME and hold.	
D-ATIS ARR <b>119.15</b> DEP <b>133.675</b>	MIAMI APP CON <b>124.85 322.3</b>	MIAMI TOWER <b>118.3 256.9</b>	GND CON <b>121.8</b> (8L/8R/12/26L/26R) <b>127.5</b> (9/27/30)	CLNC DEL <b>135.35</b>	CPDLC



ELEV <b>9</b>	<b>D</b>	TDZE <b>8</b>
800 2000 hdg 310°		DHP R-335 BRBRA DHP 11.5
VGS1 and ILS glidepath not coincident (VGS1 Angle 3.00/TCH 71).		
DCX localizer unusable within 0.5 NM.		
*LOC only.		
CATEGORY	A	B
S-ILS 30	258/40	250 (300-¾)
S-LOC 30	460/40	452 (500-¾)
	460/60	452 (500-1¼)
	460-1½	452 (500-1½)

MIAMI, FLORIDA  
Amdt 1B 17AUG17

25°48'N-80°17'W

ILS or LOC RWY 30  
MIAMI INTL (MIA)

SE-3, 31 DEC 2020 to 28 JAN 2021

SE-3, 31 DEC 2020 to 28 JAN 2021