

LOC I-MIA	APP CRS	Rwy Idg
109.5	272°	12755
		TDZE
		8
		Apt Elev
		9

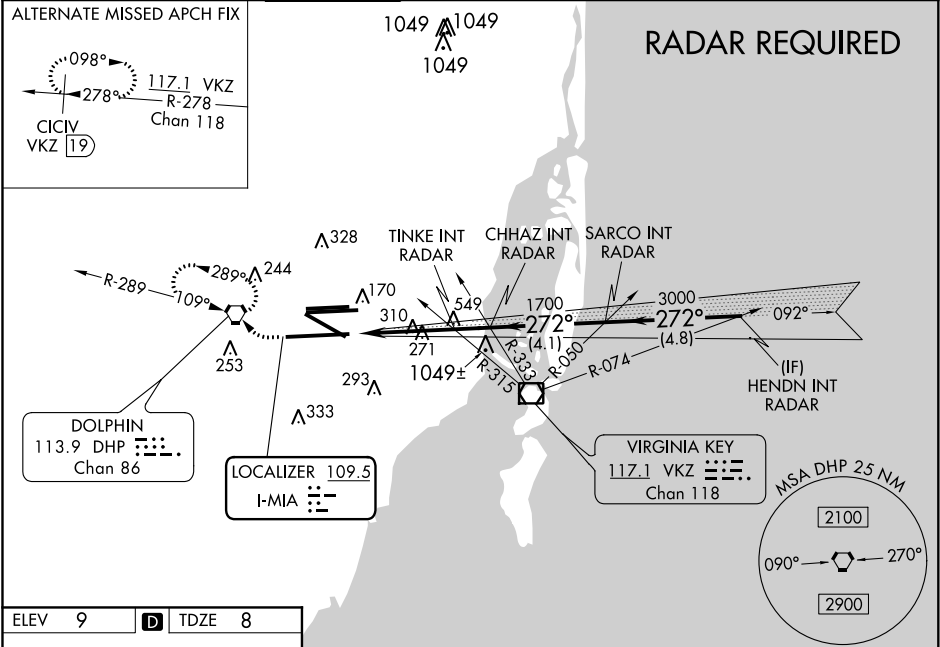
ILS or LOC RWY 27
MIAMI INTL (MIA)

Simultaneous approach authorized.
For inop ALS, increase S-ILS 27 Cat E visibility to RVR 4000 and TINKE Fix Minimums S-LOC 27 Cat E visibility to 1½ SM.
Inop table does not apply to S-LOC 27 Cats C/D/E.
**RVR 1800 authorized with use of FD or AP or HUD to DA.

MALSR

MISSED APPROACH: Climb to 600 then climbing right turn to 3000 direct DHP VORTAC and hold, continue climb-in-hold to 3000.

D-ATIS	MIAMI APP CON	MIAMI TOWER	GND CON	CLNC DEL	CPDLC
ARR 119.15 DEP 133.675	124.85 322.3	118.3 256.9	121.8 (8L/8R/12/26L/26R) 127.5 (9/27/30)	348.6	



ELEV	9	D	TDZE	8
------	---	---	------	---

TDZ/CL Rwy 8R
REIL Rwy 8L and 26R
HIRL all Rwy's

FAF to MAP 5.1 NM

Knots	60	90	120	150	180
Min:Sec	5:06	3:24	2:33	2:02	1:42

	600	3000	DHP	VGSI and ILS glidepath not coincident (VGSI Angle 3.00/TCH 71).						
	*LOC only.									
CATEGORY	A		B		C		D		E	
S-ILS 27**	208/24 200 (200-½)									
S-LOC 27	1300/40 1292 (1300-¾)		1300/55 1292 (1300-1)		1300-3		1292 (1300-3)			
TINKE FIX MINIMUMS										
S-LOC 27	560/24		552 (600-½)		560/60		552 (600-1¼)			

SE-3, 31 DEC 2020 to 28 JAN 2021

SE-3, 31 DEC 2020 to 28 JAN 2021