

VOR/DME	MLB	APP CRS	Rwy Idg	10181
110.0		089°	TDZE	32
Chan 37			Apt Elev	33

VOR RWY 9R

MELBOURNE INTL (MLB)

JEMDO FIX

minima

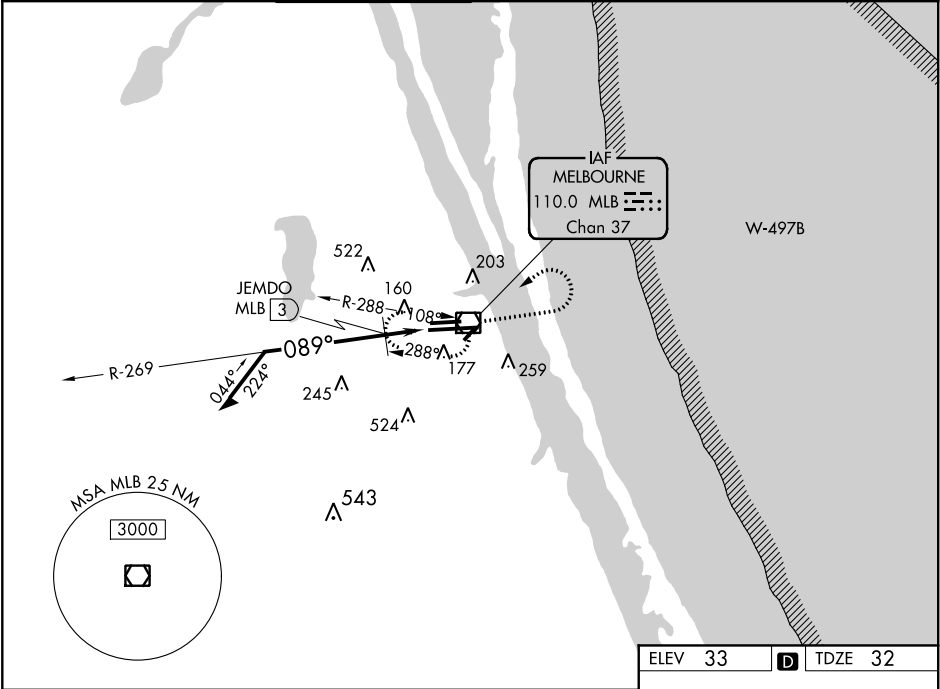
For inop MALSR,

increase S-9R Cats C and D visibility to RVR 6000.

MALSR

MISSED APPROACH: Climb to 1000, then climbing left turn to 2100 direct MLB VOR/DME and hold, continue climb-In-hold to 2100.

ATIS	ORLANDO APP CON	MELBOURNE TOWER ★	GND CON	CLNC DEL	CLNC DEL	UNICOM
132.55	132.65 281.425	118.2(CTAF) 257.8	121.9	121.9	132.65 (When twr closed)	122.95



Remain within 10 NM

1600

089°

560

0.6

1.0

1.4

269°

277°

TCH 55

MLB [2.4]

1000

2100

MLB

VGSI and descent angles not coincident

(VGSI Angle 3.00/TCH 83).

089° to VOR/DME

16

27R

27L

6000 X 150

10181 X 150

TWR 121

UNICOM 122.95

CATEGORY	A	B	C	D
S-9R	560/24 528 (600-½)		560/55 528 (600-1)	
CIRCLING	500-1 467 (500-1)	560-1 527 (600-1)	680-1¾ 647 (700-1¾)	880-2¾ 847 (900-2¾)
JEMDO FIX MINIMUMS				
S-9R	440/24 408 (500-½)		440/40 408 (500-¾)	
CIRCLING	500-1 467 (500-1)	560-1 527 (600-1)	680-1¾ 647 (700-1¾)	880-2¾ 847 (900-2¾)

REIL Rwy 27L 0

HIRL Rwy 9R-27L 0

MIRL Rwy 5-23 and 9L-27R 0

TDZ/CL Rwy 9R 0