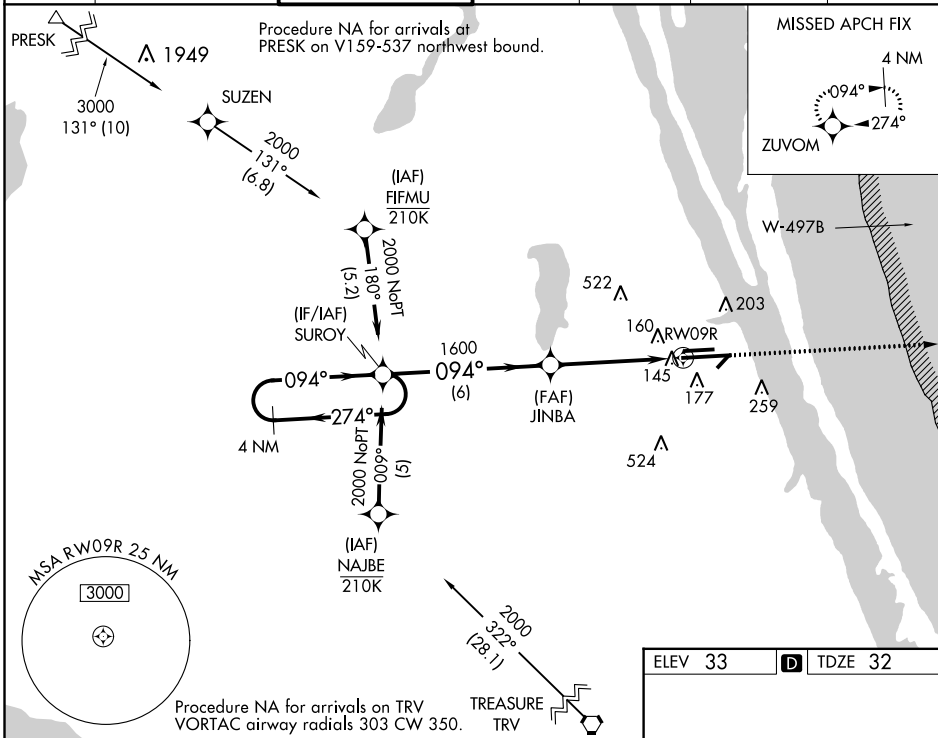


WAAS CH 60901 W09B	APP CRS 094°	Rwy Idg 10181 TDZE 32 Apt Elev 33
--	------------------------	--

RNAV (GPS) RWY 9R
MELBOURNE INTL (MLB)

RNP APCH.	MALSR	MISSED APPROACH: Climb to 2000 direct ZUVOM and hold.
For uncompensated Baro-VNAV systems, LNAV/VNAV NA below -15°C or above 54°C.		

ATIS 132.55	ORLANDO APP CON 132.65 281.425	MELBOURNE TOWER ★ 118.2(CTAF) 0 257.8	GND CON 121.9	CLNC DEL 121.9	CLNC DEL 132.65 (When twr closed)	UNICOM 122.95
-----------------------	--	---	-------------------------	--------------------------	--	-------------------------



CATEGORY	A	B	C	D
LPV DA	232/18 200 (200-½)			
LNAV/VNAV DA	427/40 395 (400-¾)			
LNAV MDA	420/24 388 (400-½)	420/35 388 (400-⅝)		
CIRCLING	500-1 467 (500-1)	560-1 527 (600-1)	680-1¾ 647 (700-1¾)	880-2¾ 847 (900-2¾)

ELEV 33	TDZE 32
---------	---------

SE-3, 31 DEC 2020 to 28 JAN 2021

SE-3, 31 DEC 2020 to 28 JAN 2021