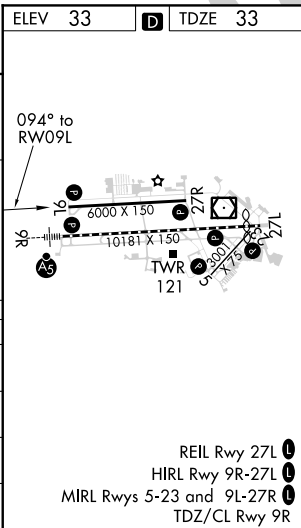
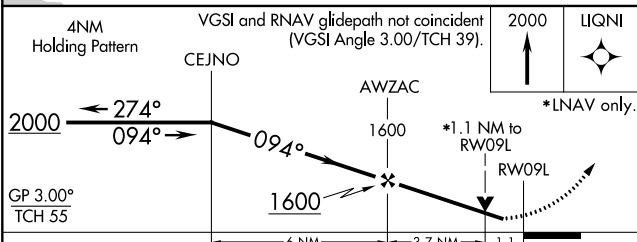
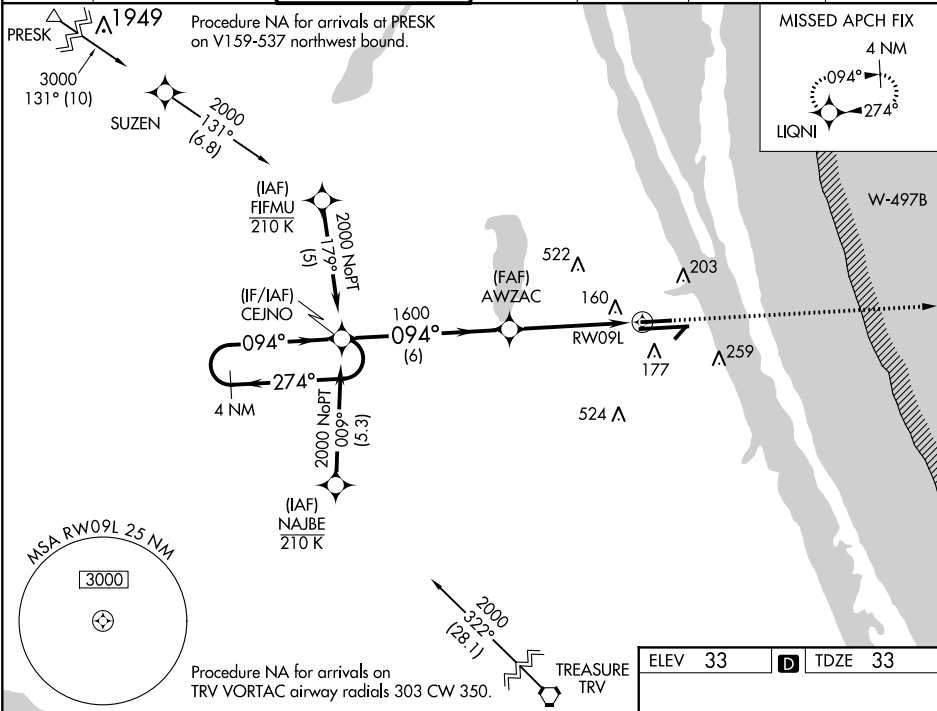


WAAS CH <b>65601</b> <b>W09A</b>	APP CRS <b>094°</b>	Rwy Idg TDZE <b>33</b> Apt Elev <b>33</b>
--	------------------------	---

**RNAV (GPS) RWY 9L**  
MELBOURNE INTL (MLB)

RNP APCH.		MISSED APPROACH: Climb to 2000 direct LIQNI and hold.	
▼ For uncompensated Baro-VNAV systems, LNAV/VNAV NA below -1.5°C (5°F) or above 54°C (130°F). Helicopter visibility reduction below ¾ SM NA.			

ATIS <b>132.55</b>	ORLANDO APP CON <b>132.65 281.425</b>	MELBOURNE TOWER ★ <b>118.2 (CTAF) 0 257.8</b>	GND CON <b>121.9</b>	CLNC DEL <b>121.9</b>	CLNC DEL <b>132.65</b> (When twr closed)	UNICOM <b>122.95</b>
-----------------------	--	--	-------------------------	--------------------------	--	-------------------------



SE-3, 31 DEC 2020 to 28 JAN 2021

SE-3, 31 DEC 2020 to 28 JAN 2021