

TACAN RWY 4

TACAN	NQX	APCH CRS	Rwy Idg	7002
Chan	78	044°	TDZE	4
			Arpt Elev	6

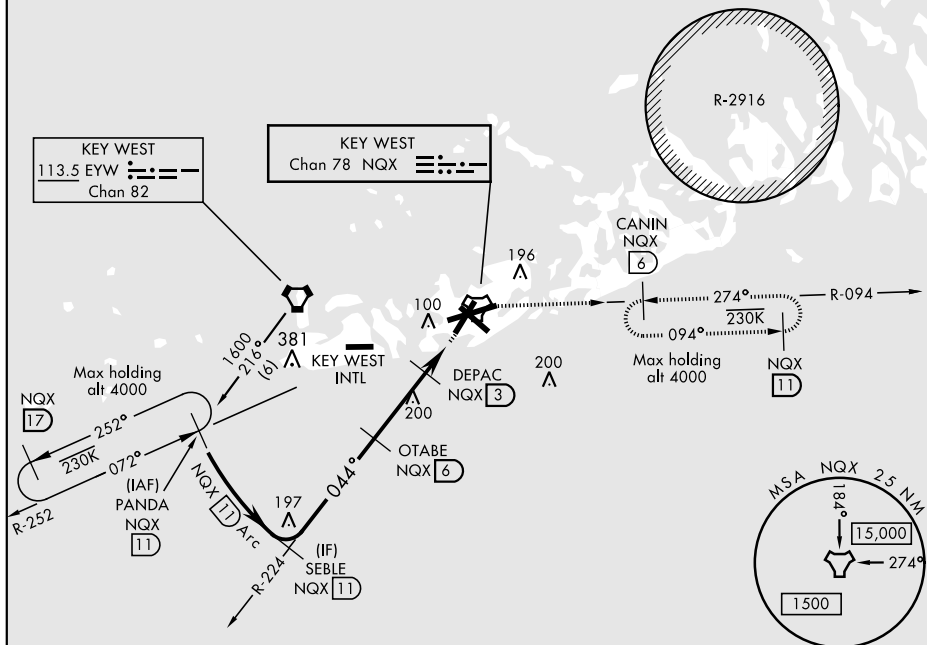
AL-214 [USN]

KEY WEST NAS (BOCA CHICA FLD) (KNQX)

<div style="border: 1px solid black; padding: 5px;"> V </div>			MISSED APPROACH: Climb to 1600 via NQX TACAN R-224 to NQX, then via NQZ R-094 to CANIN and hold.		
ATIS ★ 307.025	NAVY KEY WEST APP CON 124.025 313.7	NAVY KEY WEST TOWER ★ 118.575 340.25	GND CON 121.7 336.45	CLNC DEL 121.2 357.4	ASR/PAR

Short intermediate (5 NM) recommend early configuration.

CAUTION:
Balloon with strobe light
on unmarked cable to
14,000 in R-2916.



EMERG SAFE ALT 100 NM 15,000

The diagram illustrates the HIRL system for Runway 4, showing the layout of the runway and the associated lighting systems. The runway is divided into sections labeled A, B, C, and D. The diagram includes a table of categories (A, B, C, D) and a table of circling altitudes (460-1, 500-1, 500-1½, 560-2). A compass rose indicates the runway heading and the 044° to TACAN direction.

CATEGORY	A	B	C	D
S-4	340-1	336	(400-1)	

CIRCLING	460-1 454 (500-1)	500-1 494 (500-1)	500-1½ 494 (500-1½)	560-2 554 (600-2)

KEY WEST, FLORIDA

24°34'N-81°41'W

KEY WEST NAS (BOCA CHICA FLD) (KNQX)

TACAN RWY 4

SE-3, 31 DEC 2020 to 28 JAN 2021

SE-3, 31 DEC 2020 to 28 JAN 2021