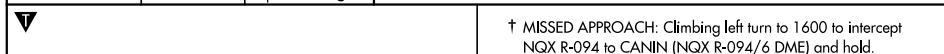


TACAN RWY 26

TACAN NQX Chan 78	APCH CRS 274°	Rwy Idg 10,001 TDZE 6 Arpt Elev 6
-----------------------------	-------------------------	--

AL-214 [USN]

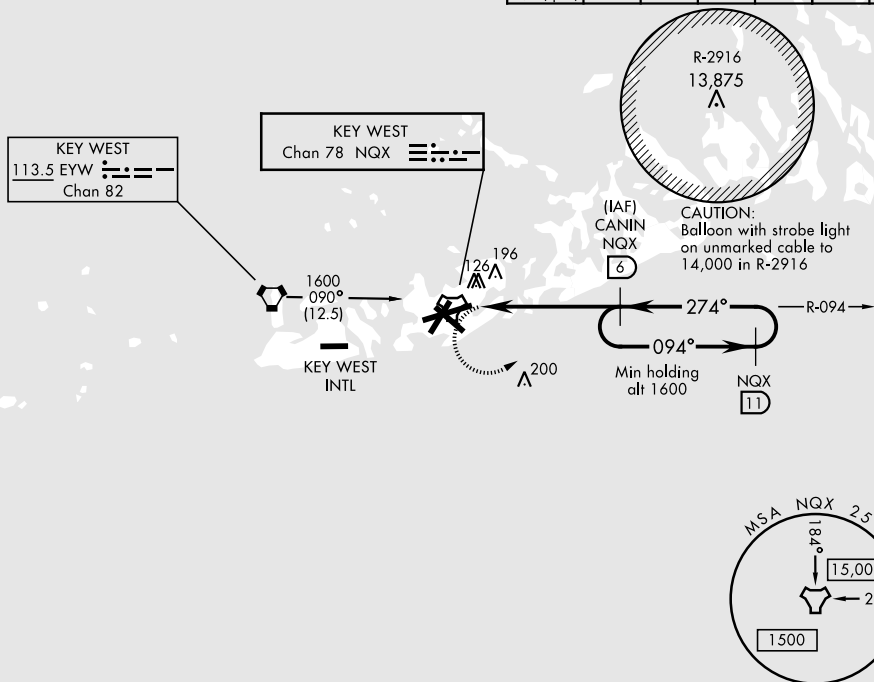
KEY WEST NAS (BOCA CHICA FLD) (KNQX)



ATIS ★ 307.025	NAVY KEY WEST APP CON 124.025 313.7	NAVY KEY WEST TOWER ★ 118.575 340.25	GND CON 121.7 336.45	CLNC DEL 121.2 357.4	ASR/PAR
-------------------	--	--	-------------------------	-------------------------	---------

† CAUTION: Missed Approach
Minimum Climb Rate to 1600

Knots	60	120	180	240	300	360
V/V(fpm)	290	580	870	1160	1450	1740



EMEG SAFE ALT 100 NM 15,000

EMEG SAFE ALT 100 NM 15,000

1600
NQX
R-094

CANIN
NQX
6

VGSI and descent angle
not coincident.
(VGSI angle 3.00/TCH 43)

CANIN
R-094
6

TACAN

UBUCI
1

1.9

274°

094°

274°

1600

1600

2.72°
TCH 43

0.4 NM

5 NM

CATEGORY	A	B	C	D
S-26	460-1	454 (500-1)	460-1 3/8	454 (500-1 3/8)
C CIRCLING	460-1 454 (500-1)	500-1 494 (500-1)	500-1 1/2 494 (500-1 1/2)	560-2 554 (600-2)

ELEV 6

TDZE 6

HIRL all Rwy

KEY WEST, FLORIDA

24°34'N-81°41'W

KEY WEST NAS (BOCA CHICA FLD) (KNQX)

TACAN RWY 26