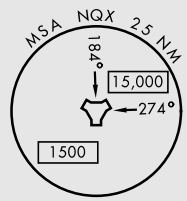
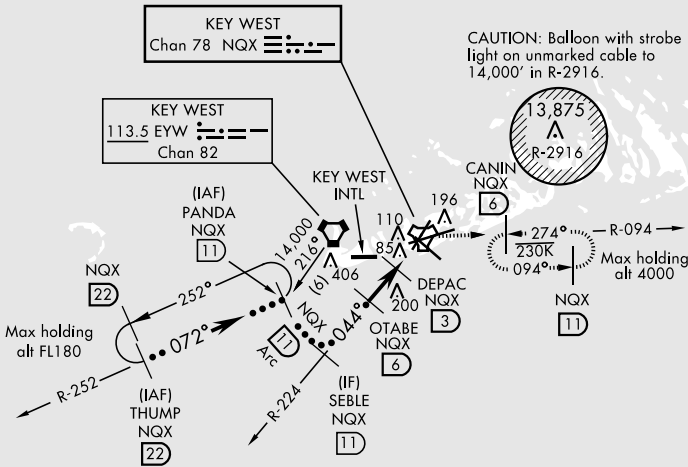
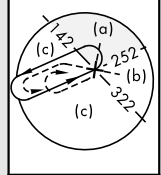


TACAN Chan 78	NQX 7002	APCH CRS 044°	Rwy Idg TDZE Arpt Elev 4 6	JAL-214 [USN]	KEY WEST NAS (BOCA CHICA FLD) (KNQX)
-------------------------	--------------------	-------------------------	--	---------------	--------------------------------------

HI-TACAN Z RWY 4

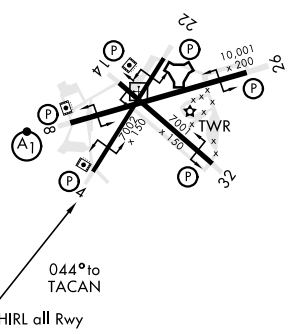
MISSED APPROACH: Climb to 1600 via NQX TACAN R-224 to NQX then via NQX R-094 to CANIN and hold.					
ATIS ★ 307.025	NAVY KEY WEST APP CON 124.025 313.7	NAVY KEY WEST TOWER ★ 118.575 340.25	GND CON 121.7 336.45	CLNC DEL 121.2 357.4	ASR/PAR

EYW VORTAC feeder to PANDA requires turn in hold.
Short intermediate, (5 NM) recommend early configuration.



EMERG SAFE ALT 100 NM 15,000

THUMP R-252 PANDA R-252 SEBLE R-224 OTABE DEPAC TACAN HEVEL NQX R-094				ELEV 6	TDZE 4
14,000 Or as directed by ATC 072° 4100 3.04° TCH 35 1600 Arc 1600 640 3 NM 1.2 NM 7				1600 NQX R-224 NQX NQX R-094	
CATEGORY	C	D	E		
S-4	340-1	336 (400-1)			
CIRCLING	500-1½ 494 (500-1½)	560-2	554 (600-2)		



HI-TACAN Z RWY 4