

KEY WEST, FLORIDA

COPTER TACAN W RWY 4

TACAN	NQX	APCH CRS	Rwy Idg	7002
Chan 78		044°	TDZE	4
			Arpt Elev	6

AL-214 [USN]

KEY WEST NAS (BOCA CHICA FLD) (KNQX)

⚠ CAUTION: When Rwy 14, 22 VGSi inop, circling to Rwy 14, 22 NA at night.	† MISSED APPROACH: Climb to 1600 via NQX TACAN R-224 to NQX, then via NQX R-094 to CANIN and hold
---	---

ATIS ★ 307.025	NAVY KEY WEST APP CON 124.025 313.7	NAVY KEY WEST TOWER ★ 118.575 361.25	GND CON 121.7 336.45	CLNC DEL 121.2 357.4	ASR/PAR
-------------------	--	---	-------------------------	-------------------------	---------

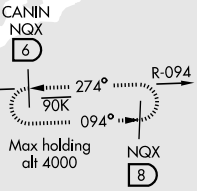
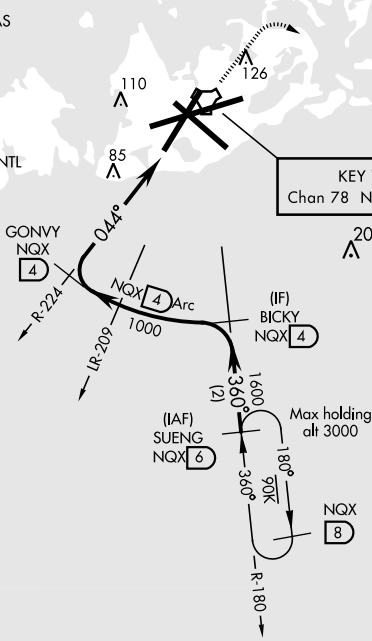
† CAUTION: Missed Approach
Minimum Climb Rate to 500

Knots	60	120	180	240	300	360
V/V(fpm)	225	450	675	900	1125	1350

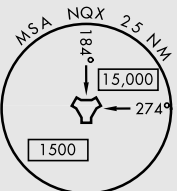
Controlling Obstacle 110

MAX 90KIAS

KEY WEST INTL

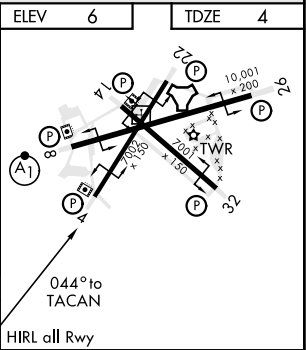


CAUTION: Balloon with strobe light on unmarked cable to 14,000 in R-2916.



EMERG SAFE ALT 100 NM 15,000

SUENG	BICKY	GONVY	1600	NQX	CANIN
6	4	4	R-224	R-094	
1600	1600	1000	044°	BTARM	TACAN
3.16° TCH 35		NQX Arc	2.8 NM		
CATEGORY	COPTER				
S-4	360-1	356	(400-1)		
CIRCLING	460-1	454	(500-1)		



KEY WEST, FLORIDA

24° 34'N - 81° 41'W

KEY WEST NAS (BOCA CHICA FLD) (KNQX)

Amtd 1 21MAY20

COPTER TACAN W RWY 4

SE-3, 31 DEC 2020 to 28 JAN 2021

SE-3, 31 DEC 2020 to 28 JAN 2021