

JACKSONVILLE, FLORIDA

# RNAV (RNP) Y RWY 28

APCH CRS	Rwy Idg	9003
276°	TDZE	13
	Arpt Elev	23

AL-209 (USN)

JACKSONVILLE NAS (TOWERS FLD) (KNIP)

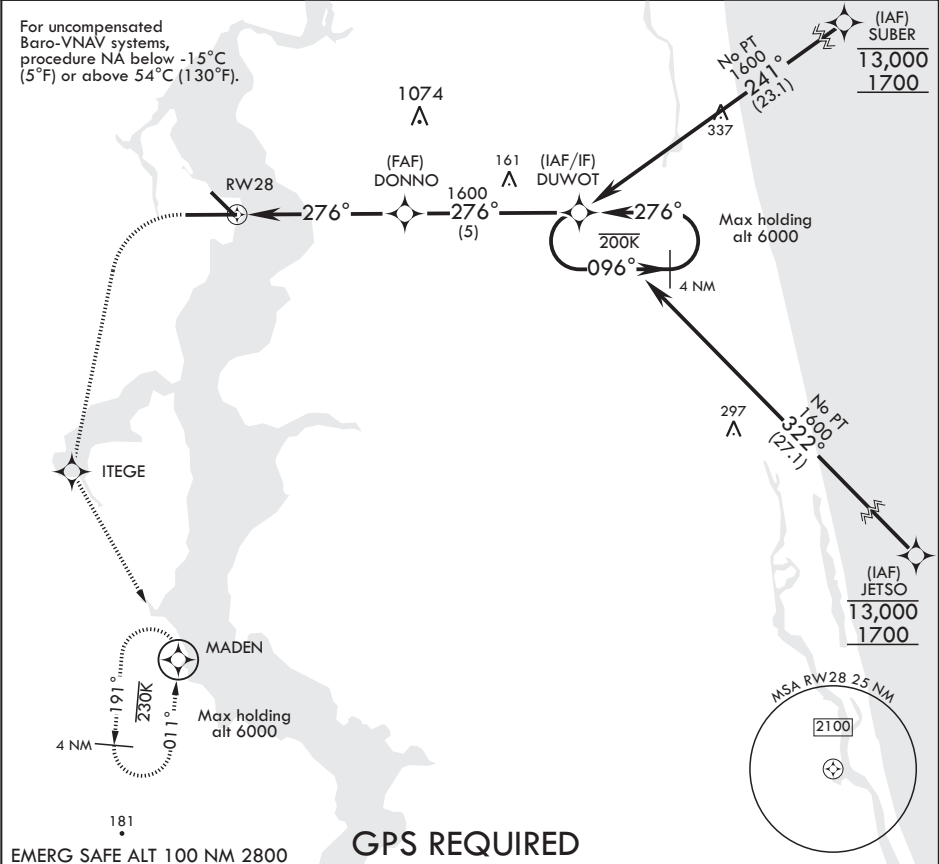
▼ \* When ALS inop increase CAT ABCD vis to 7/8 mile.



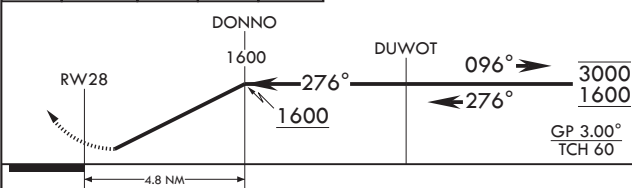
MISSED APPROACH: Climb to 600 then climbing left turn to 2000 direct ITEGE, track 156° to MADEN and hold.

ATIS	APP CON/DEP CON	TOWER	GND CON	CLNC DEL	ASR/PAR
124.35 290.425	127.775 377.075	125.15 (CTAF) 340.2	128.6 336.4	134.775 353.675	

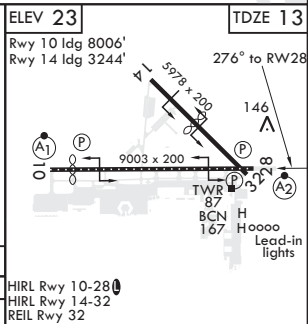
For uncompensated Baro-VNAV systems, procedure NA below -15°C (5°F) or above 54°C (130°F).



EMERG SAFE ALT 100 NM 2800



CATEGORY	A	B	C	D
RNP 0.30 DA*	310-3/4	297	(300-3/4)	



JACKSONVILLE, FLORIDA

30°14'N - 81°41'W

JACKSONVILLE NAS (TOWERS FLD) (KNIP)

Orig 10OCT19

# RNAV (RNP) Y RWY 28

SE-3, 31 DEC 2020 to 28 JAN 2021

SE-3, 31 DEC 2020 to 28 JAN 2021