


WAAS CH <b>57901</b> <b>W32A</b>	APP CRS <b>321°</b>	Rwy Idg <b>4008</b> TDZE <b>41</b> Apt Elev <b>41</b>
--	------------------------	---

RNAV (GPS) RWY 32

JACKSONVILLE EXECUTIVE AT CRAIG (CRG)

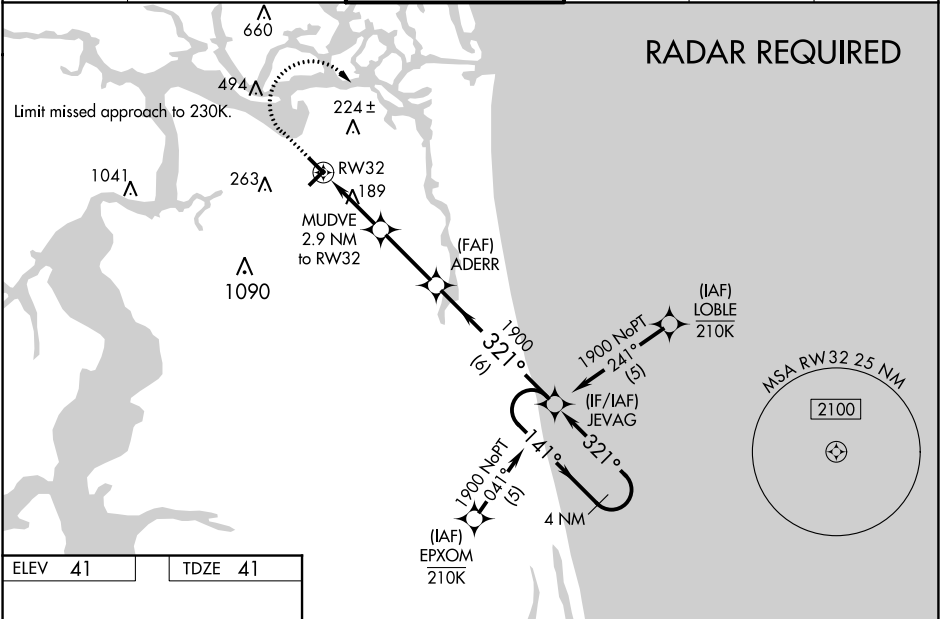
**N** Night landing: Rwy 5 NA. Baro-VNAV and VDP NA when using Jacksonville Intl altimeter setting. For uncompensated Baro-VNAV systems, LNAV/VNAV NA below -3°C (27°F) or above 54°C (130°F). DME/DME RNP-0.3 NA. Helicopter visibility reduction below ¾ SM NA. VDP NA with Jacksonville Intl altimeter setting. When local altimeter setting not received, use Jacksonville Intl altimeter setting and increase all DA 32 feet and all MDA 40 feet. For inoperative MALSR, when using Jacksonville Intl altimeter setting, increase LNAV/VNAV all Cats visibility to 1½ and LNAV Cats C/D visibility to 1¼.

MALSR

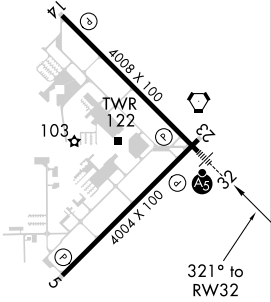


MISSED APPROACH:  
Climb to 700 then climbing right turn to 1900 direct JEVAG and hold.

ATIS <b>125.4</b>	JACKSONVILLE APP CON <b>124.9 308.4</b>	CRAIG TOWER ★ <b>132.1 (CTAF) 0 269.525</b>	GND CON <b>121.8</b>	CLNC DEL <b>118.35</b>	UNICOM <b>122.95</b>
----------------------	--	--	-------------------------	---------------------------	-------------------------



ELEV 41 TDZE 41



MIRL Rwy 5-23 1  
HIRL Rwy 14-32 1  
REIL Rwy 14 and 23 1

700 1900 JEVAG

\*LNAV only.

\*1.1 NM to RW32

\*1000

ADERR 1900

MUDVE 2.9 NM to RW32

JEVAG 4 NM Holding Pattern

141° 1900

GP 3.00° TCH 42

CATEGORY	A	B	C	D
LPV DA		241-1	200 (200-1)	
LNAV/VNAV DA		381-1	340 (400-1)	
LNAV MDA		440-1	399 (400-1)	
CIRCLING	500-1 459 (500-1)	580-1 539 (600-1)	580-1½ 539 (600-1½)	600-2 559 (600-2)