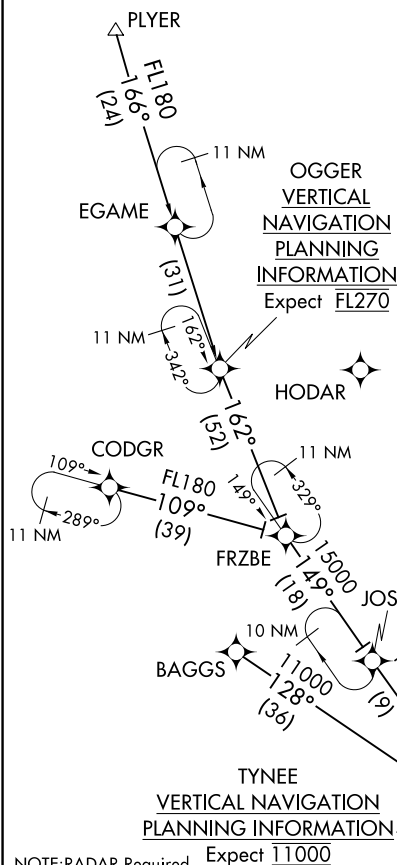


FORT MYERS APP CON \*  
125.15 306.2  
FMY ATIS  
123.725  
RSW D-ATIS  
124.65



NOTE: RADAR Required.  
NOTE: RNAV 1.  
NOTE: DME/DME/IRU or GPS Required.  
NOTE: Turbojet and Turboprop aircraft only.  
NOTE: KRSW landing Rwy 6: expect to intercept approach at LENPE.  
NOTE: FRZBE TRANSITION: ATC assigned only.  
NOTE: FRZBE TRANSITION to COOPR: for non-GPS equipped aircraft TRV and CYU must be operational.  
NOTE: FRZBE TRANSITION to LENPE: for non-GPS equipped aircraft TRV must be operational.  
NOTE: CODGR TRANSITION to COOPR: for non-GPS equipped aircraft PIE, TRV and CYU must be operational.  
NOTE: CODGR TRANSITION to LENPE: for non-GPS equipped aircraft PIE and TRV must be operational.  
NOTE: BAGGS TRANSITION to COOPR: for non-GPS equipped aircraft CYU and RSW must be operational.

## ARRIVAL ROUTE DESCRIPTION

BAGGS TRANSITION (BAGGS.TYNEE2)  
CODGR TRANSITION (CODGR.TYNEE2)  
FRZBE TRANSITION (FRZBE.TYNEE2)  
PLYER TRANSITION (PLYER.TYNEE2)

From TYNEE on track 149° to PASTR, thence....

....Landing KRSW Rwy 6: from PASTR on track 107° to LENPE, then on heading 107° or as assigned by ATC. Expect RADAR vectors to final approach course.

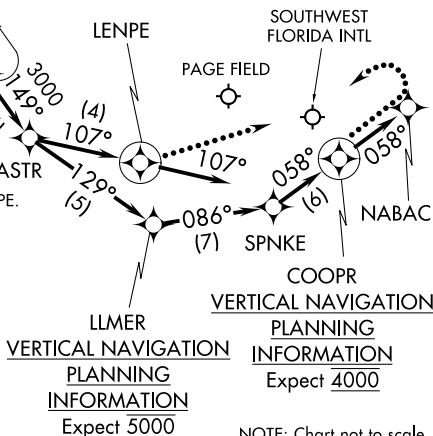
....Landing KRSW Rwy 24: from PASTR on track 129° to LLMER, then on track 086° to SPNKE, then on track 058° to COOPR, then on heading 058° or as assigned by ATC. Expect RADAR vectors to final approach course.

....Landing KFMF: from TYNEE on heading 149° or as assigned by ATC. Expect RADAR vectors to final approach course.

## LOST COMMUNICATIONS:

KRSW landing Rwy 6: track to LENPE, intercept approach.

KRSW landing Rwy 24: track to COOPR, then proceed direct to NABAC, turn left to intercept Rwy 24 approach.



NOTE: Chart not to scale.