

WAAS
CH **72624**
W05A

APP CRS
051°

Rwy Idg **5947**
TDZE **15**
Apt Elev **17**

RNAV (GPS) RWY 5

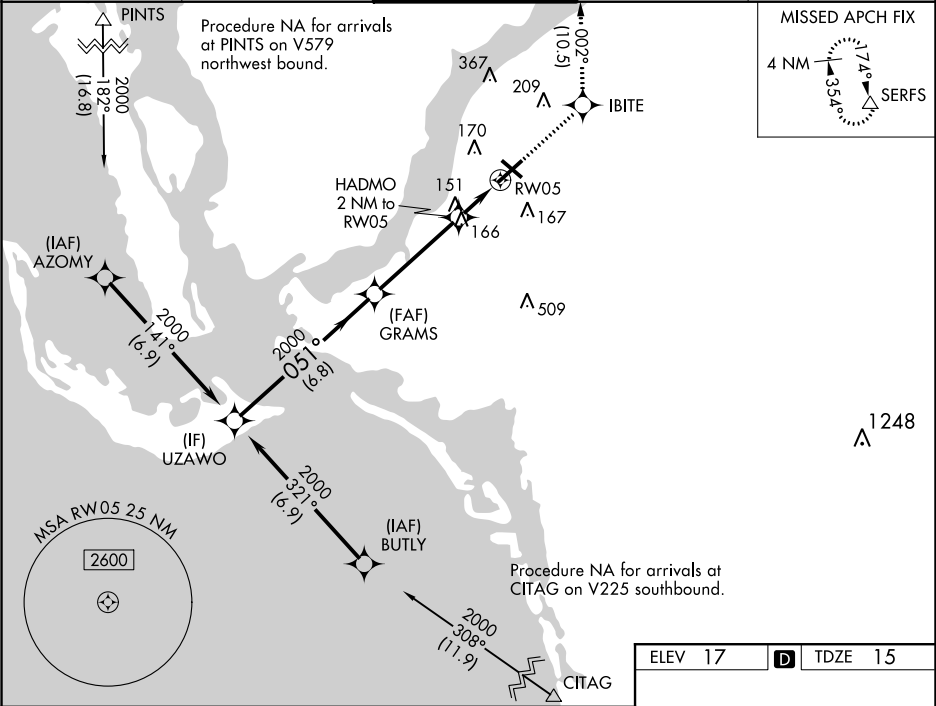
PAGE FIELD (FMY)

RNP APCH.

When Circling to Rwy 31 at night, operational VGSI required, remain on or above VGSI glidepath until threshold. Rwy 5 helicopter visibility reduction below ¾ SM NA.
For uncompensated Baro-VNAV systems, LNAV/VNAV NA below 4°C or above 54°C.

MISSED APPROACH: Climb to 2600 direct IBITE and on track 002° to SERFS and hold.

ATIS 123.725	FORT MYERS APP CON ★ 126.8 306.2	PAGE TOWER ★ 119.0 (CTAF) 0 306.95	GND CON 121.7	CLNC DEL 121.7
------------------------	--	--	-------------------------	--------------------------



2600	IBITE	tr 002°	SERFS
------	-------	---------	-------

*LNAV only.

UZAWO

GRAMS

2000

HADMO 2 NM to RW05

*1.1 NM to RW05

RW05

GP 3.00° TCH 53

051°

2000

6.8 NM

4.1 NM

0.9 NM

1.1 NM

CATEGORY

A	B	C	D
---	---	---	---

LPV DA	265-¾	250 (300-¾)	
LNAV/VNAV DA	317-7/8	302 (300-7/8)	
LNAV MDA	420-1 405 (500-1)	420-1½ 405 (500-1½)	
CIRCLING	540-1 523 (600-1)	600-1½ 583 (600-1½)	680-2 663 (700-2)

TWR 100

051° to RW05

REIL Rwy 5, 13, 23 and 31

MIRL Rwy 5-23 and 13-31