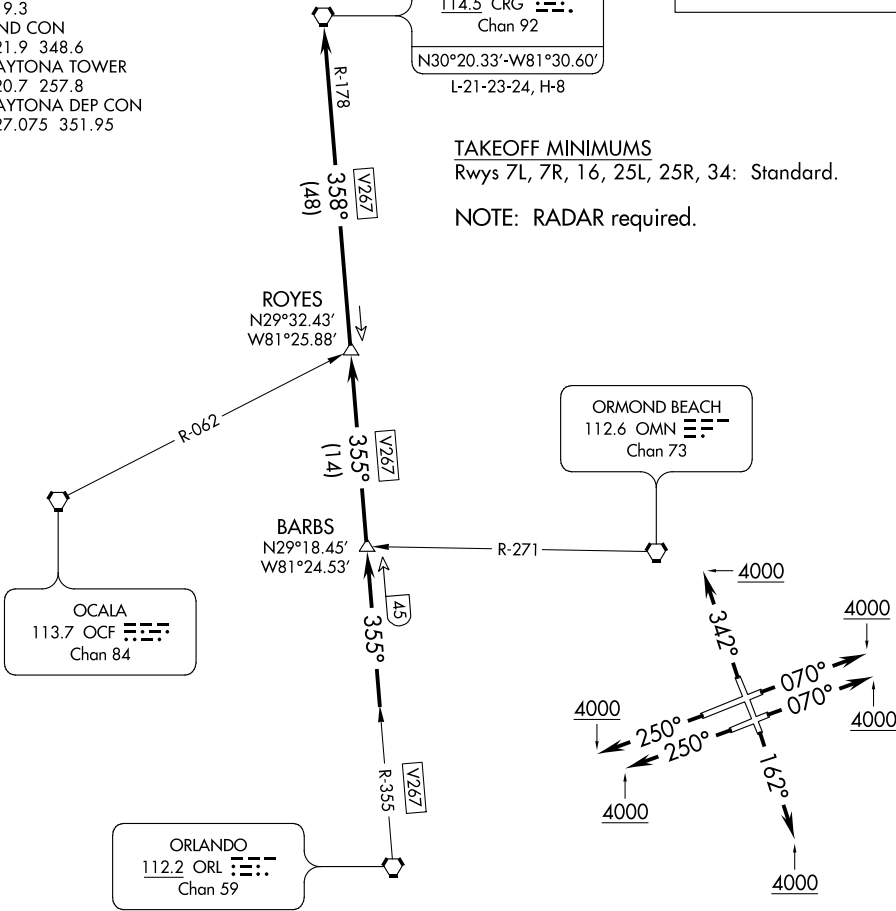


ATIS
132.875
CLNC DEL
119.3
GND CON
121.9 348.6
DAYTONA TOWER
120.7 257.8
DAYTONA DEP CON
127.075 351.95

TOP ALTITUDE:
4000

CRAIG
114.5 CRG
Chan 92
N30°20.33'-W81°30.60'
L-21-23-24, H-8

TAKEOFF MINIMUMS
Rwys 7L, 7R, 16, 25L, 25R, 34: Standard.
NOTE: RADAR required.



NOTE: Chart not to scale.



DEPARTURE ROUTE DESCRIPTION

- TAKEOFF RUNWAY 7L: Climb heading 070° to 4000 or as assigned by ATC, thence . . .
- TAKEOFF RUNWAY 7R: Climb heading 070° to 4000 or as assigned by ATC, thence . . .
- TAKEOFF RUNWAY 16: Climb heading 162° to 4000 or as assigned by ATC, thence . . .
- TAKEOFF RUNWAY 25L: Climb heading 250° to 4000 or as assigned by ATC, thence . . .
- TAKEOFF RUNWAY 25R: Climb heading 250° to 4000 or as assigned by ATC, thence . . .
- TAKEOFF RUNWAY 34: Climb heading 342° to 4000 or as assigned by ATC, thence . . .

. . . . Expect vectors to intercept CRG R-178 to CRG VORTAC, then via assigned route.
Expect clearance to filed altitude/flight level ten (10) minutes after departure.