

| | | | |
|-----------|---------|----------|------|
| LOC I-DAB | APP CRS | Rwy Idg | 9810 |
| 109.7 | 070° | TDZE | 30 |
| | | Apt Elev | 34 |

ILS or LOC RWY 7L
DAYTONA BEACH INTL (DAB)

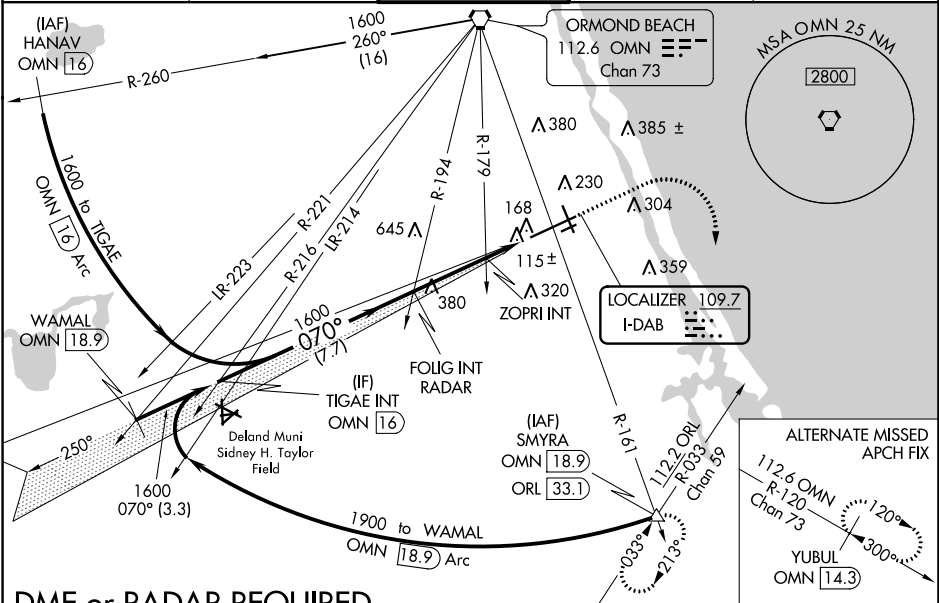
⚠ Inoperative table does not apply to S-ILS 07L. Helicopter visibility reduction below RVR 4000 NA. For inop MALSR, increase S-LOC 07L Cat A and B and ZOPRI fix minimums S-LOC 07L all Cats visibility to RVR 5500. Autopilot coupled approach NA below 535.

MALSR

AS

MISSED APPROACH: Climb to 700 then climbing right turn to 3000 on heading 175° and ORL VORTAC R-033 to SMYRA/ORL 33.1 DME and hold.

| | | | | |
|-----------------|----------------------------------|------------------------------|------------------------|-------------------|
| ATIS 132.875 | DAYTONA APP CON 125.8 269.075 | DAYTONA TOWER 120.7 257.8 | GND CON 121.9 348.6 | CLNC DEL 119.3 |
|-----------------|----------------------------------|------------------------------|------------------------|-------------------|



DME or RADAR REQUIRED

ELEV 34 **TDZE 30**

WAMAL OMN 18.9

TIGAE INT OMN 16

FOLIG INT RADAR

ZOPRI INT

SMYRA INT

ORL R-033

GS 3.00° TCH 57

1900 070°

1600

1600

3.3 NM

7.7 NM

2.9 NM

1.9 NM

***680**

***LOC only.**

| CATEGORY | A | B | C | D |
|--|--------|-------------|---------------|---------------|
| S-ILS 07L | 230/40 | | 200 (200-¾) | |
| S-LOC 07L | 680-1 | 650 (700-¾) | 680-1 ¾ | 650 (700-1 ¾) |
| CIRCLING | 680-1 | 646 (700-1) | 646 (700-1 ¾) | 666 (700-2) |
| ZOPRI FIX MINIMUMS (DUAL VOR RECEIVERS REQUIRED) | | | | |
| S-LOC 07L | 380/40 | | 350 (400-¾) | |
| CIRCLING | 540-1 | 506 (600-1) | 680-1 ¾ | 700-2 |
| | | | 646 (700-1 ¾) | 666 (700-2) |

070° 4.8 NM from FAF

TDZ/CL Rwy 7L

HIRL Rwy 7L-25R

MIRL Rwy 7R-25L and 16-34

REIL Rwy 7R, 16, 25L and 34

FAF to MAP 4.8 NM

| | | | | | |
|---------|------|------|------|------|------|
| Knots | 60 | 90 | 120 | 150 | 180 |
| Min:Seq | 4:48 | 3:12 | 2:24 | 1:55 | 1:36 |

SE-3, 31 DEC 2020 to 28 JAN 2021

SE-3, 31 DEC 2020 to 28 JAN 2021