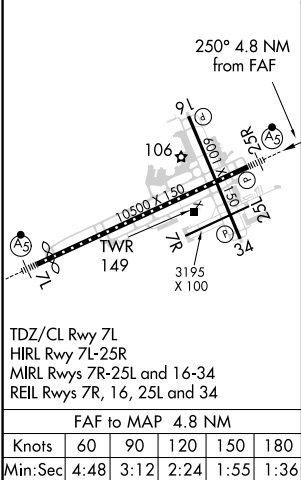
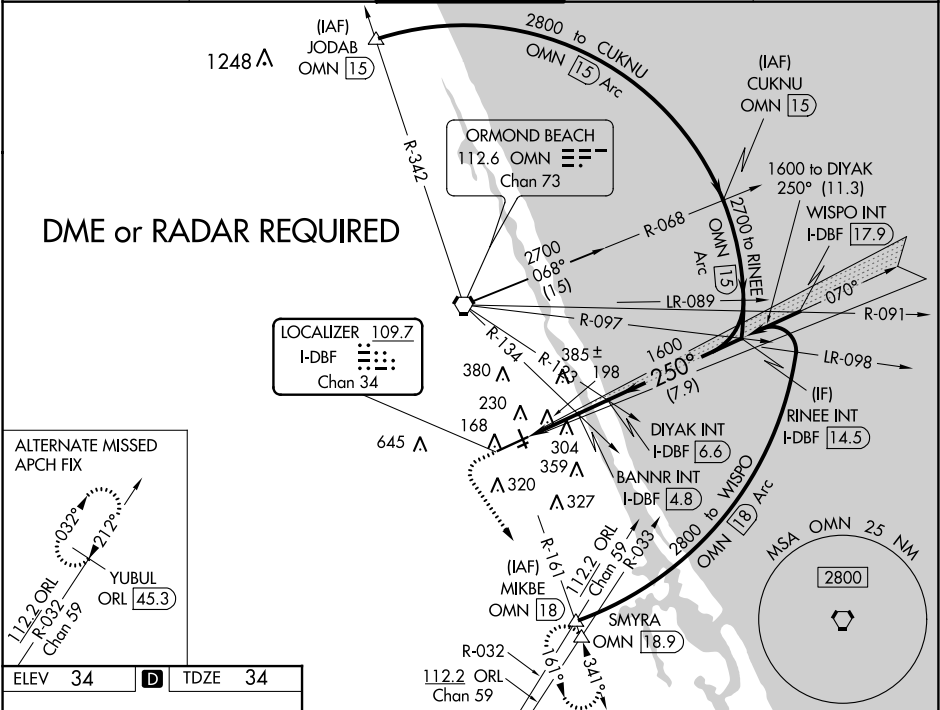


LOC/DME I-DBF	APP CRS	Rwy Idg	10293
109.7	250°	TDZE	34
Chan 34		Apt Elev	34

ILS or LOC RWY 25R  
DAYTONA BEACH INTL (DAB)

ATIS 132.875	DAYTONA APP CON 125.8 269.075	DAYTONA TOWER 120.7 257.8	GND CON 121.9 348.6	CLNC DEL 119.3
-----------------	----------------------------------	------------------------------	------------------------	-------------------



500	3000	SMYRA	VGSI and ILS glidepath not coincident (VGSI Angle 3.00/TCH 72).	RINEE INT
hdg 150°	OMN R-161		DIYAK INT I-DBF 6.6	OMN 14.5
*LOC only.	*I-DBF 2.9	BANNR INT I-DBF 4.8	1600	2700
I-DBF 1.8			1040*	GS 3.00° TCH 55
1.1 NM	1.9 NM	1.8 NM	7.9 NM	
CATEGORY	A	B	C	D
S-ILS 25R	234-1/2	200 (200-1/2)		
S-LOC 25R	1040-3/4 1006 (1100-3/4)	1040-1 1006 (1100-1)	1040-2 1/2	1006 (1100-2 1/2)
CIRCLING	1040-1 1/4 1006 (1100-1 1/4)	1040-1 1/2 1006 (1100-1 1/2)	1040-3	1006 (1100-3)
BANNR FIX MINIMUMS (DUAL VOR RECEIVERS or DME REQUIRED)				
S-LOC 25R	440-1/2	406 (500-1/2)	440-3/4	406 (500-3/4)
CIRCLING	540-1	506 (600-1)	680-1 1/4 646 (700-1 1/4)	700-2 666 (600-2)

SE-3, 31 DEC 2020 to 28 JAN 2021

SE-3, 31 DEC 2020 to 28 JAN 2021