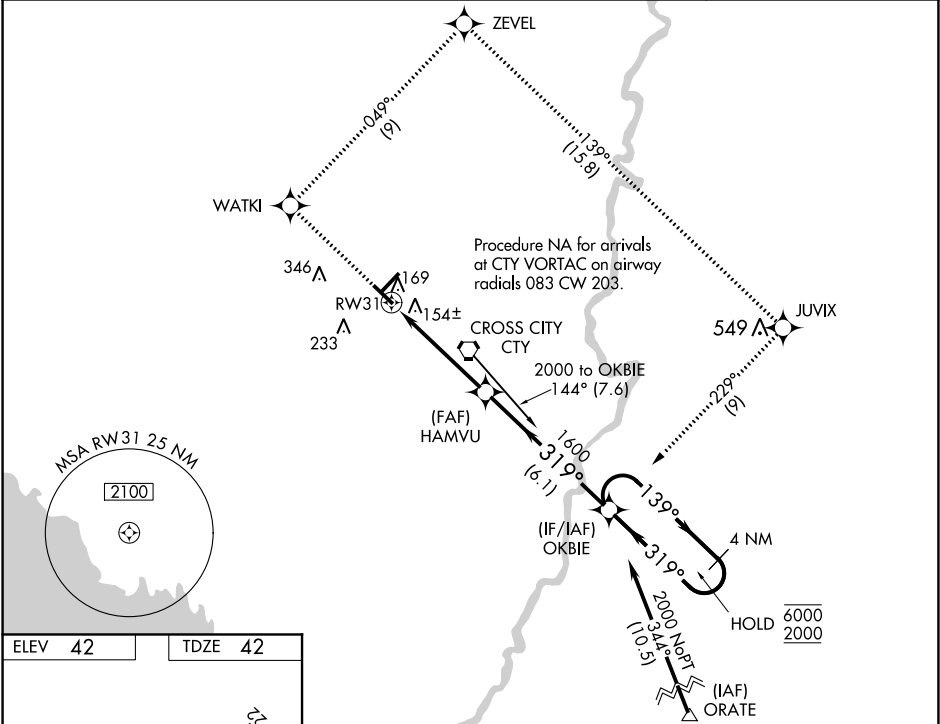


WAAS CH <b>45620</b> <b>W31A</b>	APP CRS <b>319°</b>	Rwy Idg TDZE Apt Elev	<b>5001</b> <b>42</b> <b>42</b>
--	------------------------	-----------------------------	---------------------------------------

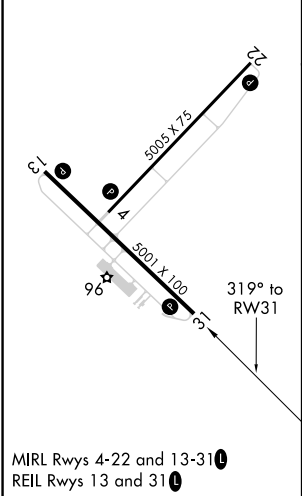
RNAV (GPS) RWY 31  
CROSS CITY (CTY)


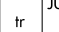

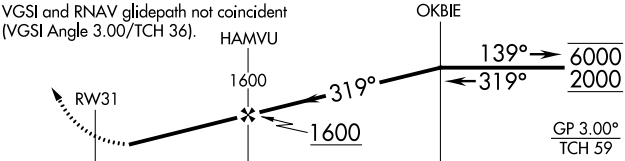
RNP APCH.	Procedure NA at night. Rwy 31 helicopter visibility reduction below 1 SM NA. Baro-VNAV NA. Use Williston altimeter setting; when not received, use NA Gainesville altimeter setting and increase all DA 25 feet and all MDA 40 feet.	MISSED APPROACH: Climb to 2000 direct WATKI and right turn on track 049° to ZEVEL and on track 139° to JUVIX and right turn on track 229° to OKBIE and hold.
-----------	--	---

AWOS-3PT <b>120.775</b>	X60 AWOS-3T <b>118.425</b>	JACKSONVILLE CENTER <b>127.8 352.0</b>	UNICOM <b>122.8 (CTAF)</b>
----------------------------	-------------------------------	---	-------------------------------



ELEV 42	TDZE 42
---------	---------



2000	WATKI	 tr 049°	ZEVEL	 tr 139°	JUVIX	 tr 229°	OKBIE	4 NM Holding Pattern
<p>VGSI and RNAV glidepath not coincident (VGSI Angle 3.00/TCH 36).</p> 								
CATEGORY		A		B		C		D
LPV	DA	383-1¼		341 (400-1¼)				
LNAV/ VNAV	DA	546-1¾		504 (600-1¾)				
LNAV MDA		580-1	538 (600-1)		580-1½ 538 (600-1½)	580-1¾ 538 (600-1¾)		