

TACAN RWY 3

TACAN COF
Chan 97

APCH CRS
017°

Rwy ldg
TDZE
Arprt Elev
9003
6
8

AL-38 [USAF]

PATRICK AFB (KCOF)

⚠ * When ALS inop, increase CAT AB RVR to 55 and vis to 1 mile, CAT CD RVR to 60 and vis to 1 1/2 miles.
** Circling NA W of Rwy 3/21.

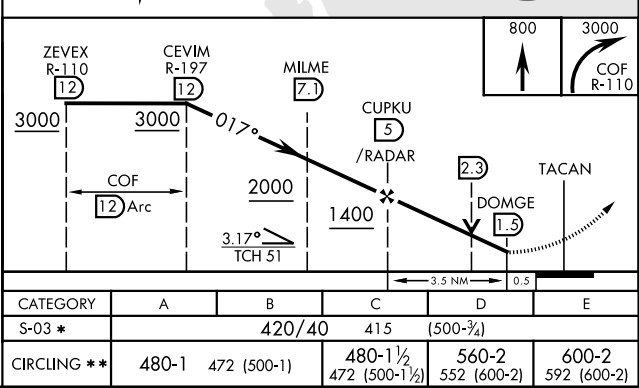
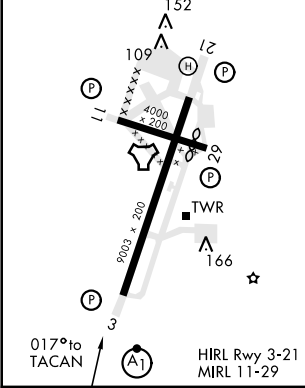
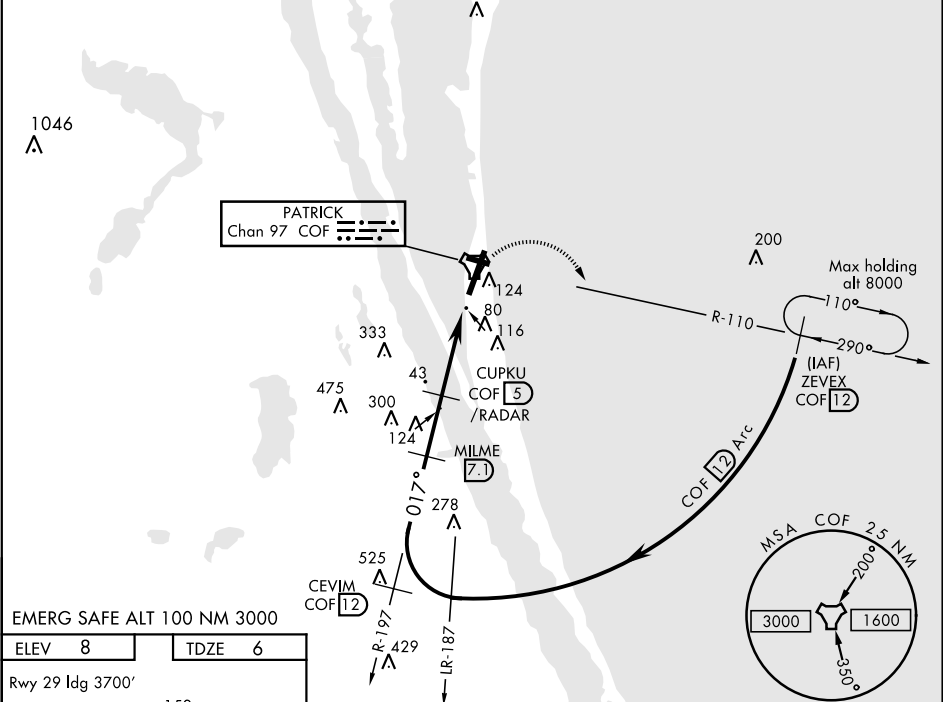
ALSF-1
A1

† MISSED APPROACH: Climb to 800, then climbing right turn to 3000, intercept the COF R-110 outbound to ZEVEX and hold, continue climb in hold to 3000.

ATIS ★ 119.175 273.5	ORLANDO APP CON 132.65 281.425	PATRICK TOWER ★ 133.75 269.375	GND CON 124.35 335.8	CLNC DEL 118.4 289.4
-------------------------	-----------------------------------	-----------------------------------	-------------------------	-------------------------

** When RWY 29 VGSi inop, Circling to RWY 29 NA at night.
When VGSi inop, procedure NA at night.
USAF only: When VGSi inop, straight-in Rwy 3 authorized at night with MAJCOM A3 approval.

† Missed approach requires use of RNAV or ATC RADAR monitoring.
CAUTION: RWY 3, Unlit terrain 20' MSL, 200' from threshold, 697' right of course.



TACAN RWY 3

SE-3, 31 DEC 2020 to 28 JAN 2021

SE-3, 31 DEC 2020 to 28 JAN 2021