

## TACAN RWY 21

TACAN COF Chan <b>97</b>	APCH CRS <b>217°</b>	Rwy Idg <b>9003</b> TDZE <b>8</b> Arpt Elev <b>8</b>	AL-38 [USAF]	PATRICK AFB (KCOF)
-----------------------------	-------------------------	--	--------------	--------------------

**T**\* When Rwy 29 VGSI inop, circling to Rwy 29 NA at night.  
Circling not authorized W of Rwy 3-21.

† MISSED APPROACH: Climb to 900, then climbing left turn to 3000, intercept the COF R-110 outbound to ZEVEX and hold, continue climb in hold to 3000.

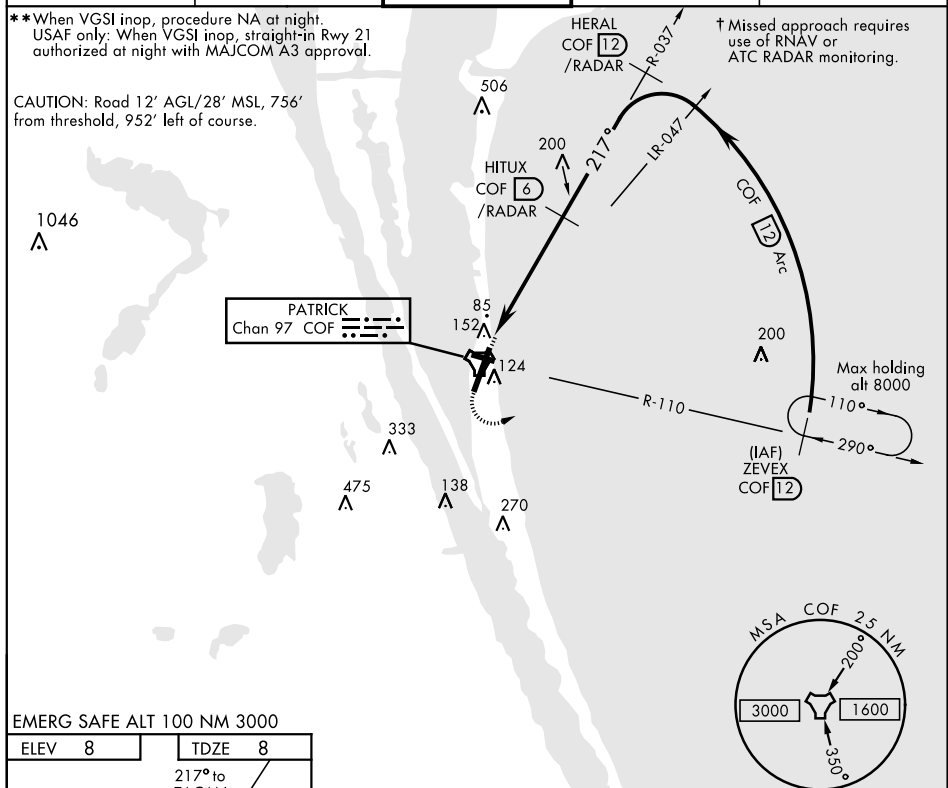
ATIS ★ 119.175 273.5	ORLANDO APP CON 132.65 281.425	PATRICK TOWER ★ 133.75 269.375	GND CON 124.35 335.8	CLNC DEL 118.4 289.4
-------------------------	-----------------------------------	-----------------------------------	-------------------------	-------------------------

\*\*When VGSI inop, procedure NA at night.  
USAF only: When VGSI inop, straight-in Rwy 21  
authorized at night with MAJCOM A3 approval.

CAUTION: Road 12' AGL/28' MSL, 756' from threshold, 952' left of course.

HERAL  
COF 12  
/RADAR

† Missed approach requires use of RNAV or ATC RADAR monitoring.



EMERG SAFE ALT 100 NM 3000

<p>900 ↑</p> <p>3000 COF R-110</p> <p>†† descent angle from HITUX to MAP</p> <p>HITUX 6 /RADAR</p> <p>HERAL R-037 12 /RADAR</p> <p>ZEVEX R-110 12</p> <p>TACAN</p> <p>JATSU 1</p> <p>1.6</p> <p>21.7°</p> <p>1800</p> <p>3000</p> <p>3000</p> <p>12</p> <p>Arc</p> <p>†† 2.99° TCH 50</p> <p>0.5 5.0 NM</p>							
CATEGORY	A		B		C	D	E
S-21 *	420/55 412 (500-1)		420/60 412 (500-1½)				
CIRCLING **	480-1 472 (500-1)	500-1 492 (500-1)	500-1½ 492 (500-1½)	560-2 552 (600-2)	600-2 592 (600-2)		