

RIVER FOUR DEPARTURE

SHL-38 [USAF]

PATRICK AFB (KCOF)

COCOA BEACH, FLORIDA

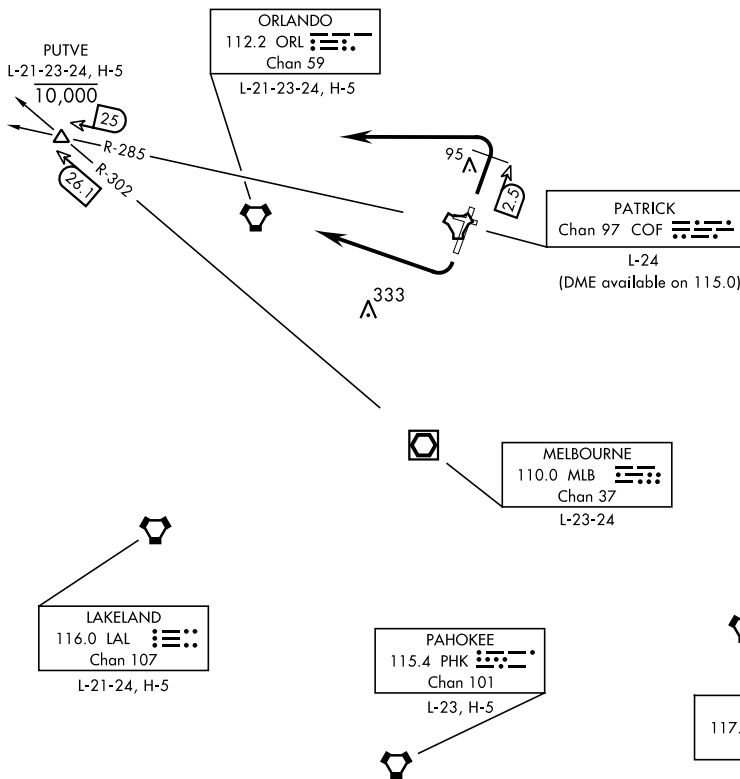
ATIS ★ 119.175 273.5
 CLNC DEL
 118.4 289.4
 GND CON
 124.35 335.8
 PATRICK TOWER ★
 133.75 269.375
 ORLANDO DEP CON
 132.65 281.425

ORMOND BEACH
 112.6 OMN
 Chan 73
 L-21-23-24, H-5

Rwy	Knots	60	120	180	240	300	360
03/21	V/V(fpm)	210	420	630	840	1050	1260

Minimum Climb Rate to 500.

TOP ALTITUDE
2000



DME REQUIRED

NOTE: Chart not to scale.



DEPARTURE ROUTE DESCRIPTION

Expect clearance to filed altitude/flight level 10 minutes after departure.

TAKE-OFF RWY 03: Track runway heading, climb and maintain 2000. At COF TACAN 2.5 DME turn left direct PUTVE (COF R-285/25 DME). After receiving climb clearance from ATC, cross PUTVE at or below 10,000. Note: All aircraft shall not commence turn prior to 2.5 DME due to noise abatement.

TAKE-OFF RWY 21: Track runway heading, climb and maintain 2000. After departure end of runway, turn right direct PUTVE (COF R-285/25 DME). After receiving climb clearance from ATC, cross PUTVE at or below 10,000.

RIVER FOUR DEPARTURE

Amdt 1 28FEB19

COCOA BEACH, FLORIDA

PATRICK AFB (KCOF)