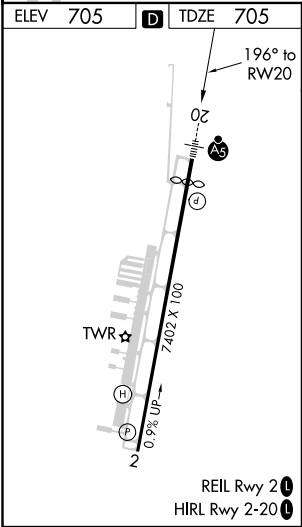
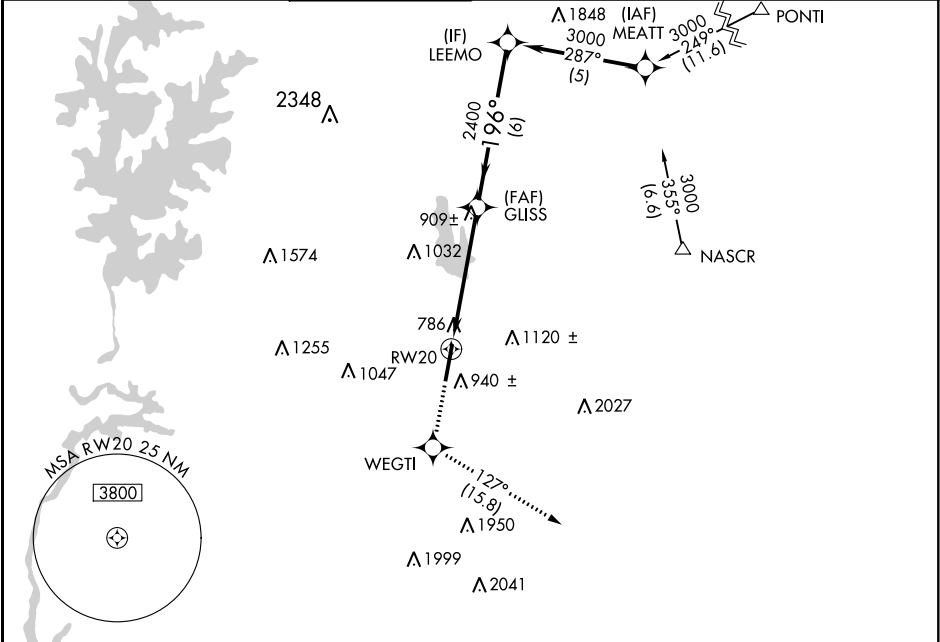


WAAS CH <b>56499</b> <b>W20A</b>	APP CRS <b>196°</b>	Rwy Idg TDZE Apt Elev	<b>6350</b> <b>705</b> <b>705</b>	RNAV (GPS) RWY 20	
				CONCORD-PADGETT RGNL (JQF)	

RNP APCH.	MALSR	MISSED APPROACH: Climb to 3000 direct WEGTI and on track 127° to LOCAS and hold.
For uncompensated Baro-VNAV systems, LNAV/VNAV NA below -16°C or above 54°C. For inop ALS, increase LNAV/VNAV visibility all Cats to 1½ SM.		

ATIS★ <b>133.675</b>	CHARLOTTE APP CON <b>128.32 307.8</b>	CONCORD TOWER★ <b>134.65 (CTAF)</b>	GND CON <b>121.85</b>	CLNC DEL <b>118.55</b>	CLNC DEL <b>127.25</b> (when twr closed)	UNICOM <b>122.95</b>
-------------------------	--	--	--------------------------	---------------------------	--	-------------------------



ELEV 705	D	TDZE 705				
			3000	WEGTI	LOCAS	LEEMO
				tr 127°		
			*LNAV only.			
			RW20	1.8 NM to RW20	GUIS	3000
					2400	196°
					2400	
						GP 3.00° TCH 44
				1.8 NM	3.3 NM	6 NM
CATEGORY	A	B	C	D		
LPV DA	955-½		250 (300-½)			
LNAV/VNAV DA	1222-1¼		517 (600-1¼)			
LNAV MDA	1300-½		595 (600-½)		1300-1¼	595 (600-1¼)
CIRCLING	1300-1		595 (600-1)		1480-2¼ 775 (800-2¼)	1480-2½ 775 (800-2½)