

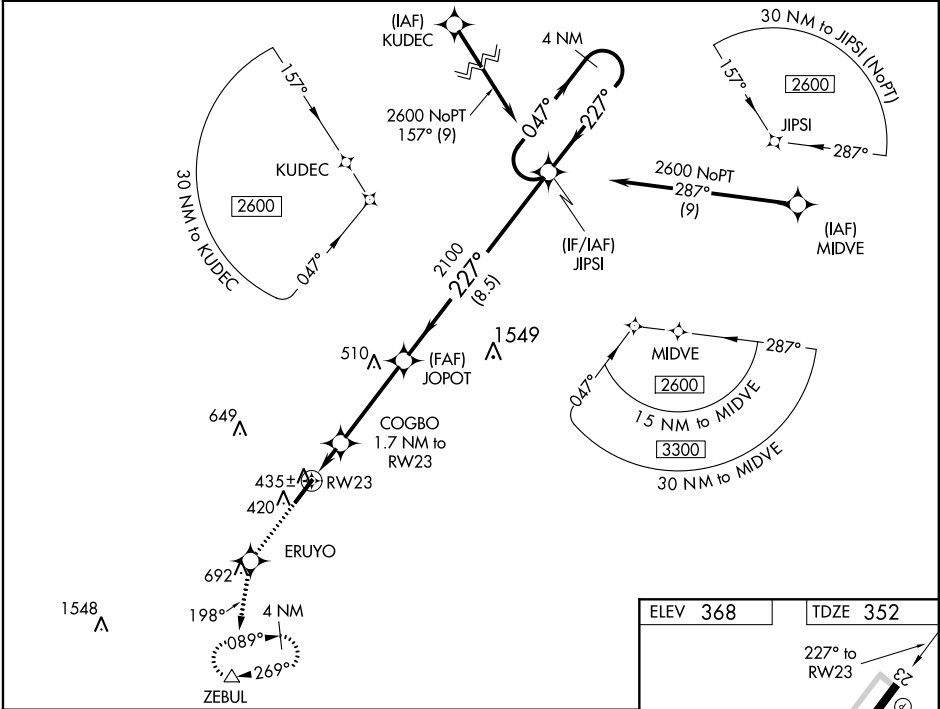
WAAS CH <b>62825</b> <b>W23A</b>	APP CRS <b>227°</b>	Rwy Idg TDZE <b>352</b> Apt Elev <b>368</b>
----------------------------------------	------------------------	---------------------------------------------------

RNAV (GPS) RWY 23  
TRIANGLE NORTH EXECUTIVE (LHZ)

▼ Baro-VNAV NA when using Raleigh-Durham altimeter setting. For uncompensated Baro-VNAV systems, LNAV/VNAV NA below -15°C (5°F) or above 41°C (105°F). When VGSi inop, Straight-in/Circling Rwy 23 procedure NA at night. DME/DME RNP-0.3 NA. Helicopter visibility reduction below 1 SM NA. When local altimeter setting not received, use Raleigh-Durham altimeter setting and increase all DA 65 feet and all MDA 80 feet; increase LNAV/VNAV all Cats visibility 1/8 mile and LNAV Cats C/D visibility 3/8 mile.

MISSED APPROACH: Climb to 3300 direct ERUYO and on track 198° to ZEBUL and hold, continue climb-in-hold to 3300.

AWOS-3 <b>118.325</b>	RALEIGH APP CON <b>125.3 353.675</b>	UNICOM <b>123.0 (CTAF) 0</b>
--------------------------	-----------------------------------------	---------------------------------



3300	ERUYO	tr 198°	ZEBUL			
↑	✱		△			
* LNAV only						
COGBO 1.7 NM to RW23						
RW23						
*900						
1.7 NM						
3.7 NM						
8.5 NM						
JOPOT 2100						
227°						
2100						
JIPSI 4 NM Holding Pattern						
047°→						
←227°						
2600						
GP 3.00° TCH 46						
CATEGORY	A			B	C	D
LPV DA				602-1	250 (300-1)	
LNAV/ VNAV	DA	619-1			267 (300-1)	
LNAV MDA	700-1			348 (400-1)		
CIRCLING	800-1 432 (500-1)	820-1 452 (500-1)	820-1½ 452 (500-1½)	920-2 552 (600-2)		

