

WAAS CH 99740 W19A	APP CRS 187°	Rwy Idg TDZE 1303 Apt Elev 1303
----------------------------------------	------------------------	-----------------------------------------------------

RNAV (GPS) RWY 19

WILKES COUNTY (UKF')

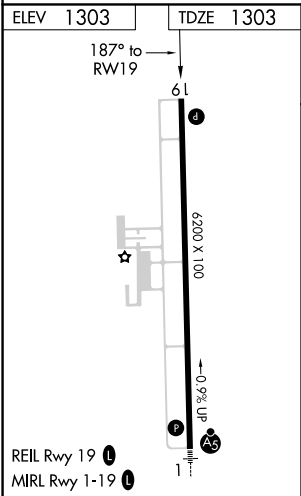
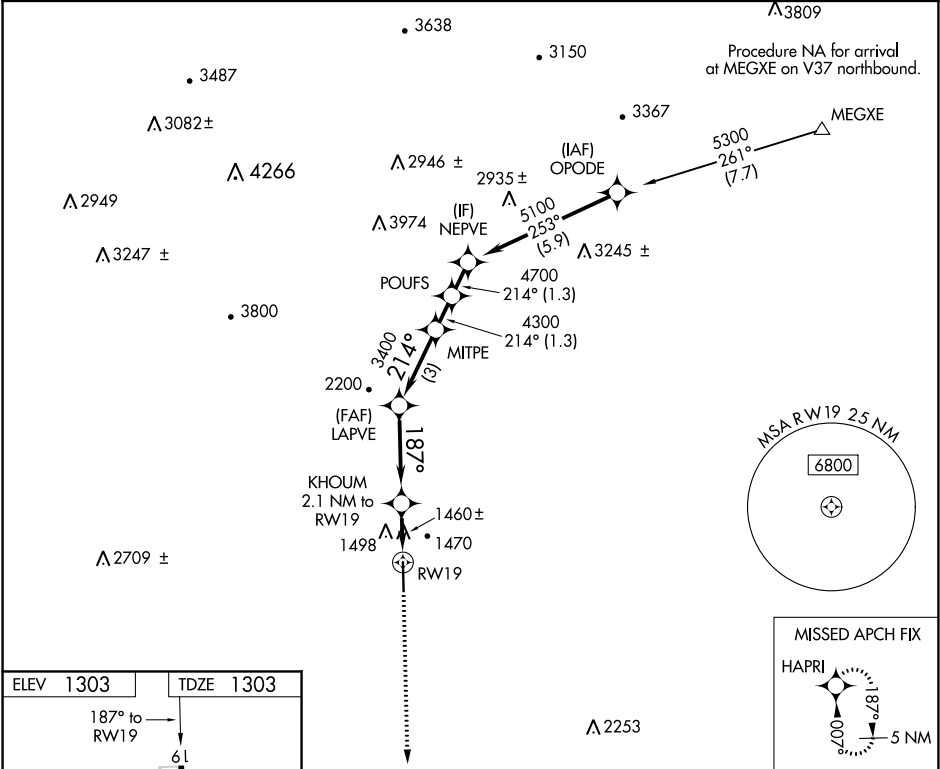
▼

⚠

DME/DME RNP-0.3 NA. VDP NA when using Hickory altimeter setting. When local altimeter setting not received, use Hickory altimeter setting and increase all MDAs 100 feet and LP and LNAV visibility Cats C/D ¼ SM and increase Circling visibility Cat C ½ SM. Rwy 19 helicopter visibility reduction below ¾ SM NA.

MISSED APPROACH: Climb to 5000 direct HAPRI and hold, continue climb-in-hold to 5000.

AWOS-3 126.625	ATLANTA CENTER 125.15 263.0	UNICOM 122.7 (CTAF) 0
--------------------------	---------------------------------------	---------------------------------



5000	HAPRI	VGSI and descent angles not coincident (VGSI Angle 3.00/TCH 47).	KHOUM	LAPVE	MITPE	POUFS	NEPVE
2.1 NM to RWY19	1.2 NM to RWY19	≤ 3.45° TCH 47	2100	3400	4300	4700	5100
1.2	0.9	3.5 NM	3 NM	1.3 NM	1.3 NM		
CATEGORY	A	B	C	D			
LP MDA	1720-1	417 (500-1)	1720-1½	417 (500-1½)			
LNAV MDA	1760-1	457 (500-1)	1760-1¾	457 (500-1¾)			
CIRCLING	1800-1	1880-1	1880-1½	2240-3			
	497 (500-1)	577 (600-1)	577 (600-1½)	937 (1000-3)			

SE-2, 31 DEC 2020 to 28 JAN 2021

SE-2, 31 DEC 2020 to 28 JAN 2021