

APP CRS
354°

Rwy Idg
TDZE
Apt Elev

3700
12
12

RNAV (GPS) RWY 35
MT PLEASANT RGNL-FAISON FIELD (L.R.O)

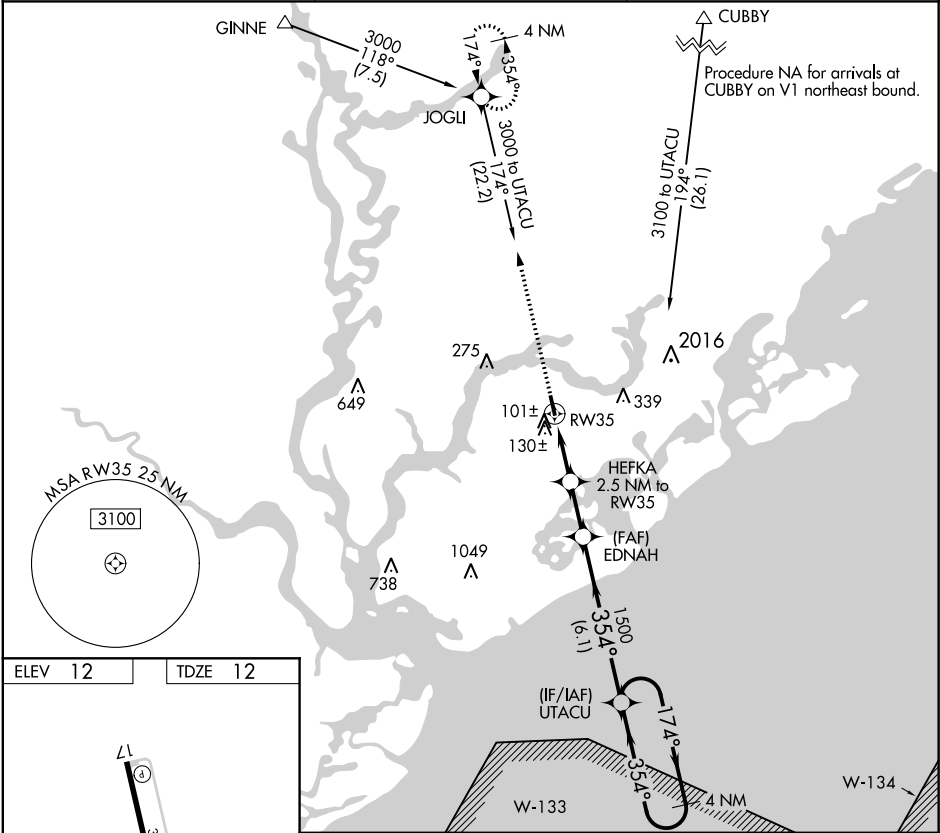
RNP APCH.
When local altimeter setting not received, use Charleston AFB/Intl altimeter setting and increase all MDA 40 feet, and LNAV Cat C visibility 1/2 mile.

MISSED APPROACH: Climb to 3000 direct JOGLI and hold, continue climb-in-hold to 3000.

AWOS-3
118.625

CHARLESTON APP CON
119.3 379.925

UNICOM
122.7 (CTAF) 0



ELEV 12

TDZE 12

L1

3700 x 75

35

354° to RW35

3000

JOGLI

HEFKA 2.5 NM to RW35

EDNAH

UTACU

3000

174°

354°

354°

1500

840

2.5 NM

2 NM

6.1 NM

CATEGORY	A	B	C	D
LNAV MDA	380-1 368 (400-1)			NA
CIRCLING	460-1 448 (500-1)	480-1 468 (500-1)	520-1½ 508 (600-1½)	NA