

WAAS  
CH **62817**  
**W17A**

APP CRS  
**174°**

Rwy Idg **3700**  
TDZE **12**  
Apt Elev **12**

RNAV (GPS) RWY 17

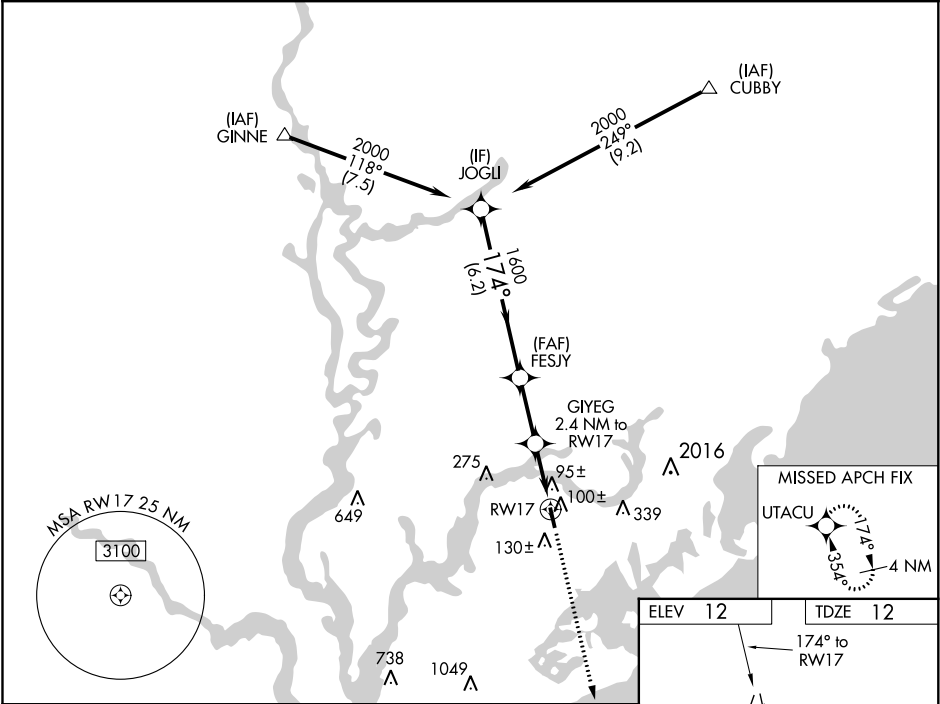
MT PLEASANT RGNL-FAISON FIELD (LRO)

⚠

For uncompensated Baro-VNAV systems, LNAV/VNAV NA below -1.5°C (5°F) or above 54°C (130°F). DME/DME RNP-0.3 NA. When local altimeter setting not received, use Charleston AFB/Intl altimeter setting and increase all DA/MDA 40 feet, increase LPV, LNAV/VNAV all Cats, and LNAV Cat C visibility ½ mile. Baro-VNAV NA with Charleston AFB/Intl altimeter setting. VDP NA with Charleston AFB/Intl altimeter setting. Helicopter visibility reduction below ¾ SM NA.

MISSED APPROACH: Climb to 3000 direct UTACU and hold, continue climb-in-hold to 3000.

AWOS-3 <b>118.625</b>	CHARLESTON APP CON <b>119.3 379.925</b>	UNICOM <b>122.7 (CTAF) 0</b>
--------------------------	--	---------------------------------



VGSi and RNAV glidepath not coincident (VGSi Angle 4.00/TCH 28).		3000		UTACU
JOGLI		FESJY		
2000		1600		
GP 3.00°		TCH 35°		
174°		1600		
6.2 NM		2.4 NM		
A		B		
LPV DA		307-1		NA
LNAV/VNAV DA		389-1¼		NA
LNAV MDA		360-1		NA
CIRCLING		460-1		NA
448 (500-1)		480-1		
468 (500-1)		520-1½		
508 (600-1½)				