

WAAS  
CH **86512**  
**W06A**

APP CRS  
**060°**

Rwy Idg  
TDZE  
Apt Elev

**5702**  
**604**  
**609**

RNAV (GPS) RWY 6

RALEIGH RGNL AT PERSON COUNTY (TDF)

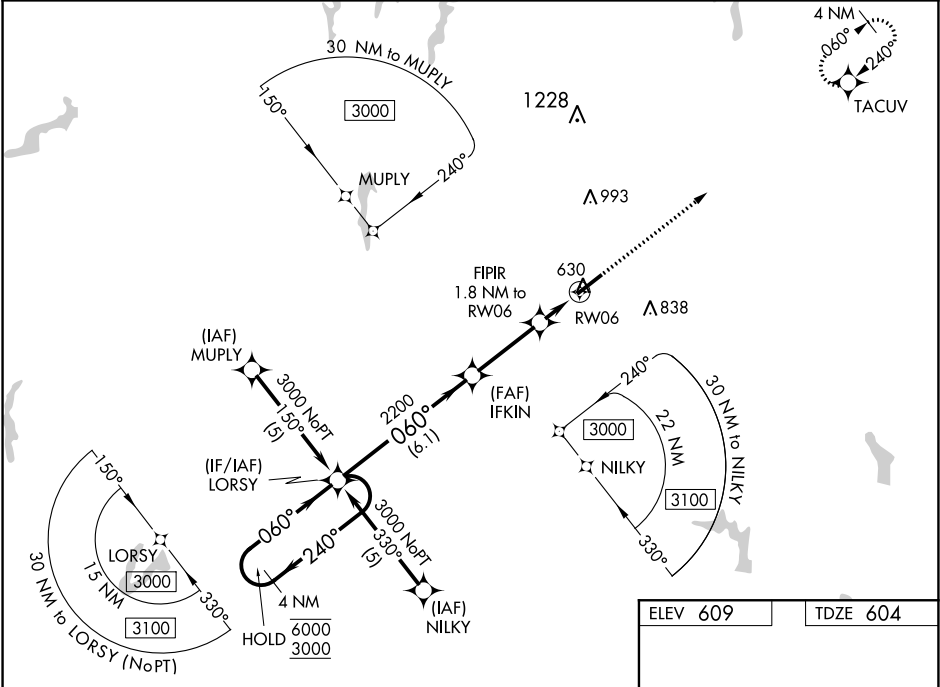
RNP APCH

Baro-VNAV and VDP NA when using Danville altimeter setting. For uncompensated Baro-VNAV systems, LNAV/VNAV NA below -16°C or above 54°C. When local altimeter setting not received, use Danville altimeter setting and increase all LPV DA to 916, LNAV/VNAV DA to 1150 and all MDA 80 feet, increase LNAV Cat C visibility to 7/8 SM. For inop ALS, increase LNAV/VNAV all Cats visibility to 1 3/8 SM and LNAV Cat C visibility to 1 SM. For inop ALS, when using Danville altimeter setting, increase LPV all Cats visibility to 7/8 SM, LNAV/VNAV all Cats visibility to 1 3/8 SM, and LNAV Cat D visibility to 1 3/8 SM.

MALSR

MISSED APPROACH:  
Climb to 3000 direct TACUV and hold.

AWOS-3 <b>126.725</b>	RALEIGH APP CON <b>132.35 256.9</b>	GCO <b>119.7</b>	UNICOM <b>122.7 (CTAF) 0</b>
--------------------------	--	---------------------	---------------------------------



4 NM Holding Pattern

LORSY

GP 3.00° TCH 40

VGSi and RNAV glidepath not coincident (VGSi Angle 3.00/TCH 41).

IFKIN

FIPR 1.8 NM to RW06

\*1.1 NM to RW06

RW06

\*1200

\*LNAV only

TACUV

060° to RW06

CATEGORY	A	B	C	D
LPV DA		854-1/2	250 (300-1/2)	
LNAV/VNAV DA		1090-1 1/4	486 (500-1 1/4)	
LNAV MDA	980-1/2	376 (400-1/2)	980-3/8	980-1
			376 (400-3/8)	376 (400-1)
CIRCLING	1080-1	471 (500-1)	1080-1 1/2	1160-2
			471 (500-1 1/2)	551 (600-2)

MIRL Rwy 6-24 0