

KRITR FIVE DEPARTURE (RNAV)

LINCOLNTON-LINCOLN COUNTY RGNL (IPJ)

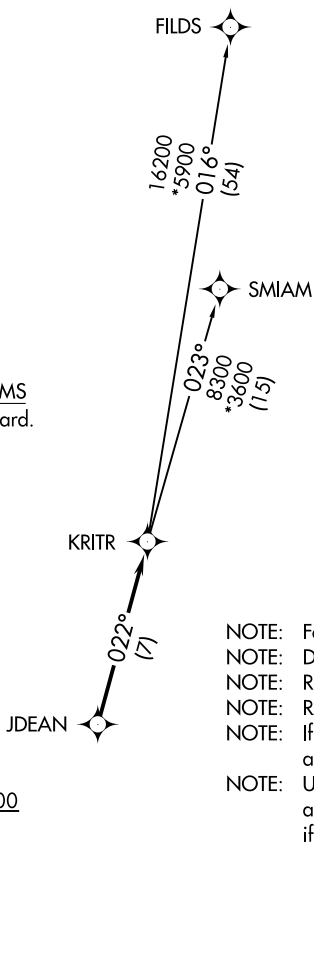
AL-6894 (FAA)

LINCOLNTON, NORTH CAROLINA

AWOS-3
119.675
CLNC DEL (GCO)
124.9
UNICOM (CTAF)
123.05
CHARLOTTE DEP CON
134.75 257.2

TOP ALTITUDE:
3000

TAKEOFF MINIMUMS
Rwys 5, 23: Standard.



- NOTE: For turbojets only.
- NOTE: DME/DME/IRU or GPS required.
- NOTE: RNAV 1.
- NOTE: RADAR required.
- NOTE: If unable to accept climb rates, advise ATC on initial contact.
- NOTE: Upon reaching 10000 MSL, accelerate to and maintain 280K, if unable advise ATC.

NOTE: Chart not to scale.



DEPARTURE ROUTE DESCRIPTION

TAKEOFF RWY 5: Climb heading 063° to 2000 before proceeding on course.

TAKEOFF RWY 23: Climb heading 243° to 2800 before turning left.

Climb on heading assigned by ATC, expect RADAR vectors to JDEAN, then on track 022° to KRITR, then on assigned transition. Maintain 3000, expect filed altitude within 10 minutes after departure.

FILDS TRANSITION (KRITR5.FILDS)
SMIAM TRANSITION (KRITR5.SMIAM)

KRITR FIVE DEPARTURE (RNAV)

(KRITR5.KRITR) 03JAN19

LINCOLNTON, NORTH CAROLINA

LINCOLNTON-LINCOLN COUNTY RGNL (IPJ)

SE-2, 31 DEC 2020 to 28 JAN 2021