

LOC/DME I-IPJ

**111.15**

Chan 48 (Y)

APP CRS

**233°**

Rwy Idg

**5501**

TDZE

**872**

Apt Elev

**878**

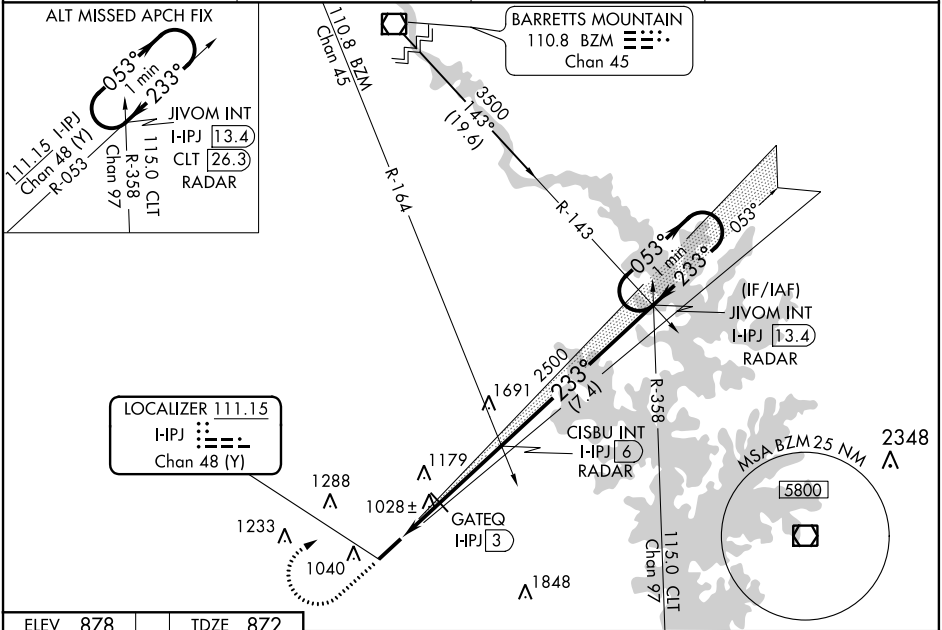
ILS Z or LOC Z RWY 23

LINCOLNTON-LINCOLN COUNTY RGNL (IPJ)

⚠ When local altimeter setting not received, use Charlotte altimeter setting: increase DA to 1212 feet and visibility 1/8 SM; increase all MDAs 80 feet and visibility S-LOC 23 Cats C/D 1/8 SM and Circling Cats C/D 1/4 SM and GATEQ Fix Minimums Cats C/D 1/4 SM. VDP NA when using Charlotte altimeter setting. Rwy 23 helicopter visibility reduction below 3/4 SM NA.

MISSED APPROACH: Climb to 1600 then climbing right turn to 3100 on heading 043° and BZM VOR/DME R-143 to JIVOM INT/I-IPJ 13.4 DME/RADAR and hold.

AWOS-3 <b>119.675</b>	CHARLOTTE APP CON <b>134.75 257.2</b>	CLNC DEL (GCO) <b>124.9</b>	UNICOM <b>123.05 (CTAF) 0</b>
--------------------------	--	--------------------------------	----------------------------------



ELEV 878

TDZE 872

233° 5 NM from FAF

0.3% UP

5700 x 100

REIL Rws 5 and 23

MIRL Rwy 5-23

1600

3100

hdg 043°

BZM R-143

JIVOM INT

CISBU INT I-IPJ 6 RADAR

JIVOM INT I-IPJ 13.4 RADAR

One Minute Holding Pattern

053° 3000

233°

GS 3.00° TCH 47

1.2 NM

0.8 NM

3 NM

7.4 NM

CATEGORY	A	B	C	D
S-ILS 23	1149-7/8 277 (300-7/8)			
S-LOC 23	1460-1	588 (600-1)	1460-1 3/4 588 (600-1 3/4)	
CIRCLING	1460-1	582 (600-1)	1640-2 1/4 762 (800-2 1/4)	1640-2 1/2 762 (800-2 1/2)
GATEQ FIX MINIMUMS				
S-LOC 23	1280-1	408 (500-1)	1280-1 1/8 408 (500-1 1/8)	
CIRCLING	1400-1 522 (600-1)	1440-1 562 (600-1)	1640-2 1/4 762 (800-2 1/4)	1640-2 1/2 762 (800-2 1/2)