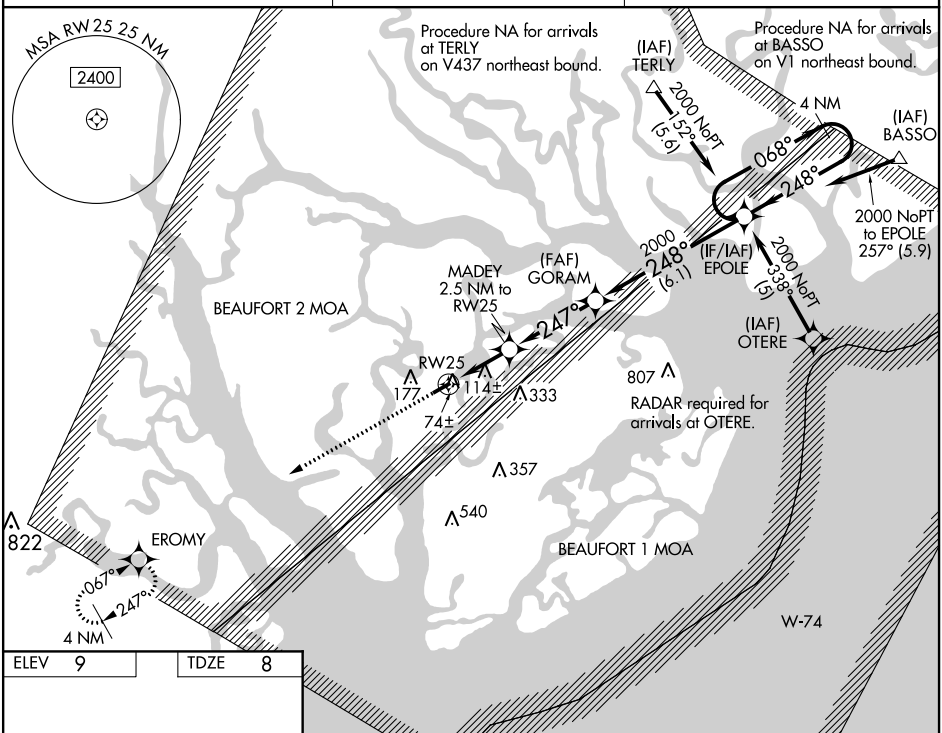


RNAV (GPS) RWY 25

BEAUFORT EXECUTIVE (ARW)

ASR For uncompensated Baro-VNAV systems, LNAV/VNAV NA below -15°C (5°F) or above 54°C (130°F). DME/DME RNP-0.3 NA. When local altimeter setting not received, use Beaufort MCAS/Merritt Field altimeter setting and increase LPV DA to 226, LNAV/VNAV DA to 352, and all MDA 20 feet. VDP and Baro-VNAV NA when using Beaufort MCAS/Merritt Field altimeter setting.

UNICOM
122.7 (CTAF) **L**

2000 ↑ EROMY	VGS1 and RNAV glidepath not coincident (VGS1 Angle 3.00/TCH 25).					
*LNAV only.	<p>MADEY 2.5 NM to RW25</p> <p>GORAM 2000</p> <p>EPOLE</p> <p>4 NM Holding Pattern</p> <p>RW25</p> <p>*1.1 NM to RW25</p> <p>247°</p> <p>*840</p> <p>248°</p> <p>GP 3.00° TCH 40</p>					
CATEGORY	A	B	C	D		
LPV DA	208-1	200 (200-1)		NA		
LNAV/VNAV DA	334-1¼	326 (400-1¼)		NA		
LNAV MDA	380-1	372 (400-1)		NA		
CIRCLING	480-1	471 (500-1)	480-1½ 471 (500-1½)	NA		